

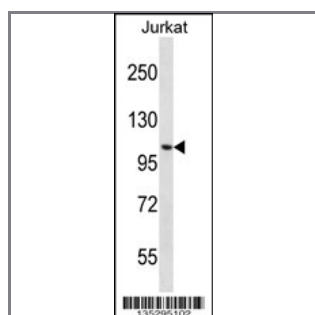
CENPC1 Antibody (Center)

Peptide Affinity Purified Rabbit Polyclonal Antibody (Pab)

Catalog #	Applications:	Reactivity:	Accessions:
AP16246c	WB, E	H	Q03188 , NP_001803.2
Concentration:	Size:	Isotype:	Clone Name:
0.25 mg/ml	0.1 mg	Rabbit Ig	RB35295

Application Data:

Calculated MW: 106834 Da



CENPC1 Antibody (Center) (Cat. #AP16246c) western blot analysis in Jurkat cell line lysates (35ug/lane). This demonstrates the CENPC1 antibody detected the CENPC1 protein (arrow).

Gene ID:	Gene Symbol:
1060	CENPC1

Other Names:

Centromere protein C 1;CENPC1;CENPC; ICEN7

Target/Specificity:

This CENPC1 antibody is generated from rabbits immunized with a KLH conjugated synthetic peptide between 394-424 amino acids from the Central region of human CENPC1.

Application Notes:

The suggested dilution is:

ELISA 1:1,000

Western blotting 1:100~500

Format:

Purified polyclonal antibody supplied in PBS with 0.09% (W/V) sodium azide. This antibody is purified through a protein A column, followed by peptide affinity purification.

Storage:

CENPC1 Antibody (Center) can be refrigerated at 2-8°C for up to 6 months. For long term

storage, place the at -20°C.

Precautions:

CENPC1 Antibody (Center) is for research use only and not for use in diagnostic or therapeutic procedures.
