

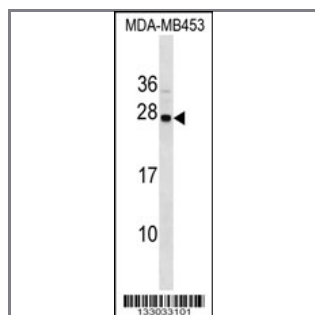
SYNGR1 Antibody (C-term)

Peptide Affinity Purified Rabbit Polyclonal Antibody (Pab)

Catalog #	Applications:	Reactivity:	Accessions:
AP16240b	WB, E	H	NP_663783.1 , NP_004702.2 , O43759 , NP_663791.1

Concentration:	Size:	Isotype:	Clone Name:
0.25 mg/ml	0.1 mg	Rabbit Ig	RB33033

Application Data: Calculated MW: 25456 Da



SYNGR1 Antibody (C-term) (Cat. #AP16240b) western blot analysis in MDA-MB453 cell line lysates (35ug/lane). This demonstrates the SYNGR1 antibody detected the SYNGR1 protein (arrow).

Gene ID:	Gene Symbol:
9145	SYNGR1

Other Names:

Synaptogyrin-1;SYNGR1;

Target/Specificity:

This SYNGR1 antibody is generated from rabbits immunized with a KLH conjugated synthetic peptide between 153-183 amino acids from the C-terminal region of human SYNGR1.

Application Notes:

The suggested dilution is:

ELISA 1:1,000

Western blotting 1:100~500

Format:

Purified polyclonal antibody supplied in PBS with 0.09% (W/V) sodium azide. This antibody is purified through a protein A column, followed by peptide affinity purification.

Storage:

SYNGR1 Antibody (C-term) can be refrigerated at 2-8°C for up to 6 months. For long term storage, place the at -20°C.

Precautions:

SYNGR1 Antibody (C-term) is for research use only and not for use in diagnostic or therapeutic procedures.
