

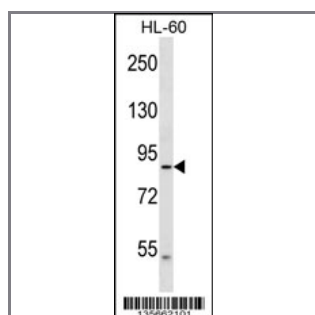
DNAH2 Antibody (N-term)

Peptide Affinity Purified Rabbit Polyclonal Antibody (Pab)

Catalog #	Applications:	Reactivity:	Accessions:
AP16211a	WB, E	H	NP_065928.2 , Q9P225
Concentration:	Size:	Isotype:	Clone Name:
0.25 mg/ml	0.1 mg	Rabbit Ig	RB35662

Application Data:

Calculated MW: 100kd Isoform 3. 507698 Da



DNAH2 Antibody (N-term) (Cat. #AP16211a) western blot analysis in HL-60 cell line lysates (35ug/lane). This demonstrates the DNAH2 antibody detected the DNAH2 protein (arrow).

Gene ID:	Gene Symbol:
146754	DNAH2

Other Names:

Dynein heavy chain 2, axonemal;DNAH2;DNAHC2; DNHD3; KIAA1503

Target/Specificity:

This DNAH2 antibody is generated from rabbits immunized with a KLH conjugated synthetic peptide between 439-468 amino acids from the N-terminal region of human DNAH2.

Application Notes:

The suggested dilution is:

ELISA 1:1,000

Western blotting 1:100~500

Format:

Purified polyclonal antibody supplied in PBS with 0.09% (W/V) sodium azide. This antibody is purified through a protein A column, followed by peptide affinity purification.

Storage:

DNAH2 Antibody (N-term) can be refrigerated at 2-8°C for up to 6 months. For long term storage,

place the at -20°C.

Precautions:

DNAH2 Antibody (N-term) is for research use only and not for use in diagnostic or therapeutic procedures.
