

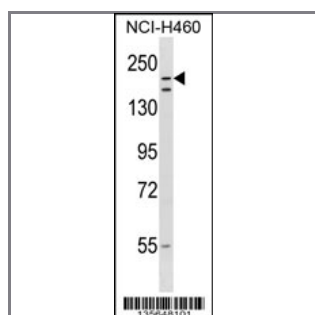
RNF160 Antibody (Center)

Peptide Affinity Purified Rabbit Polyclonal Antibody (Pab)

Catalog #	Applications:	Reactivity:	Accessions:
AP16206c	WB, E	H	O94822 , NP_056380.2
Concentration:	Size:	Isotype:	Clone Name:
0.25 mg/ml	0.1 mg	Rabbit Ig	RB35648

Application Data:

Calculated MW: 200552 Da



RNF160 Antibody (Center) (Cat. #AP16206c) western blot analysis in NCI-H460 cell line lysates (35ug/lane). This demonstrates the RNF160 antibody detected the RNF160 protein (arrow).

Gene ID:	Gene Symbol:
26046	RNF160

Other Names:

RING finger protein 160; RNF160; C21orf10; C21orf98; KIAA0714; ZNF294

Target/Specificity:

This RNF160 antibody is generated from rabbits immunized with a KLH conjugated synthetic peptide between 1086-1115 amino acids from the Central region of human RNF160.

Application Notes:

The suggested dilution is:

ELISA 1:1,000

Western blotting 1:100~500

Format:

Purified polyclonal antibody supplied in PBS with 0.09% (W/V) sodium azide. This antibody is purified through a protein A column, followed by peptide affinity purification.

Storage:

RNF160 Antibody (Center) can be refrigerated at 2-8°C for up to 6 months. For long term storage,

place the at -20°C.

Precautions:

RNF160 Antibody (Center) is for research use only and not for use in diagnostic or therapeutic procedures.
