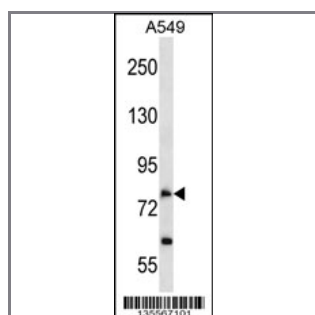


SLC28A2 Antibody (N-term)

Peptide Affinity Purified Rabbit Polyclonal Antibody (Pab)

Catalog #	Applications:	Reactivity:	Accessions:
AP16185a	WB, E	H	O43868 , NP_004203.2
Concentration:	Size:	Isotype:	Clone Name:
0.25 mg/ml	0.1 mg	Rabbit Ig	RB35567

Application Data: Calculated MW: 71926 Da



SLC28A2 Antibody (N-term) (Cat. #AP16185a) western blot analysis in A549 cell line lysates (35ug/lane). This demonstrates the SLC28A2 antibody detected the SLC28A2 protein (arrow).

Gene ID:	Gene Symbol:
9153	SLC28A2

Other Names:

Sodium/nucleoside cotransporter 2; SLC28A2; CNT2

Target/Specificity:

This SLC28A2 antibody is generated from rabbits immunized with a KLH conjugated synthetic peptide between 13-42 amino acids from the N-terminal region of human SLC28A2.

Application Notes:

The suggested dilution is:

ELISA 1:1,000

Western blotting 1:100~500

Format:

Purified polyclonal antibody supplied in PBS with 0.09% (W/V) sodium azide. This antibody is purified through a protein A column, followed by peptide affinity purification.

Storage:

SLC28A2 Antibody (N-term) can be refrigerated at 2-8°C for up to 6 months. For long term

storage, place the at -20°C.

Precautions:

SLC28A2 Antibody (N-term) is for research use only and not for use in diagnostic or therapeutic procedures.
