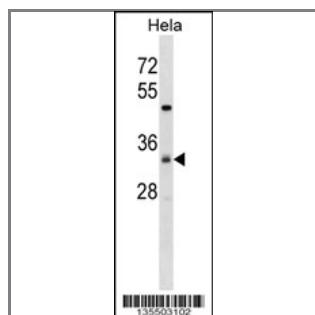


## ZDHC7 Antibody (C-term)

### Peptide Affinity Purified Rabbit Polyclonal Antibody (Pab)

Catalog #	Applications:	Reactivity:	Accessions:
AP16172b	WB, E	H	<a href="#">NP_001139020.1</a> , <a href="#">Q9NXF8</a> , <a href="#">NP_060210.2</a>
Concentration:	Size:	Isotype:	Clone Name:
0.25 mg/ml	0.1 mg	Rabbit Ig	RB35503

#### Application Data: Calculated MW: 35140 Da



ZDHC7 Antibody (C-term) (Cat. #AP16172b) western blot analysis in HeLa cell line lysates (35ug/lane). This demonstrates the ZDHC7 antibody detected the ZDHC7 protein (arrow).

Gene ID:	Gene Symbol:
<a href="#">55625</a>	ZDHHC7

#### Other Names:

Palmitoyltransferase ZDHHC7;ZDHHC7;ZNF370

#### Target/Specificity:

This ZDHC7 antibody is generated from rabbits immunized with a KLH conjugated synthetic peptide between 239-267 amino acids from the C-terminal region of human ZDHC7.

#### Application Notes:

The suggested dilution is:  
ELISA 1:1,000  
Western blotting 1:100~500

#### Format:

Purified polyclonal antibody supplied in PBS with 0.09% (W/V) sodium azide. This antibody is purified through a protein A column, followed by peptide affinity purification.

#### Storage:

ZDHC7 Antibody (C-term) can be refrigerated at 2-8°C for up to 6 months. For long term storage, place the at -20°C.

---

**Precautions:**

ZDHC7 Antibody (C-term) is for research use only and not for use in diagnostic or therapeutic procedures.

---