

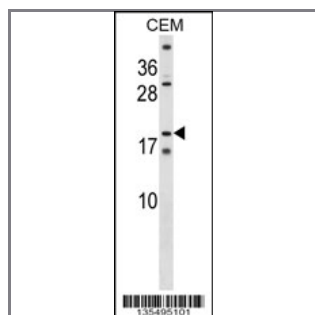
## SSX4 Antibody (Center)

### Peptide Affinity Purified Rabbit Polyclonal Antibody (Pab)

| Catalog # | Applications: | Reactivity: | Accessions:   |
|-----------|---------------|-------------|---|
| AP16168c  | WB, E         | H           | <a href="#">NP_001030004.1</a> ,<br><a href="#">NP_005627.1</a> ,<br><a href="#">O60224</a> , <a href="#">NP_783856.1</a> |

| Concentration: | Size:  | Isotype:  | Clone Name: |
|----------------|--------|-----------|-------------|
| 0.25 mg/ml     | 0.1 mg | Rabbit Ig | RB35495     |

#### Application Data: Calculated MW: 21858 Da



SSX4 Antibody (Center) (Cat. #AP16168c) western blot analysis in CEM cell line lysates (35ug/lane). This demonstrates the SSX4 antibody detected the SSX4 protein (arrow).

| Gene ID:                                      | Gene Symbol: |
|---|--------------|
| <a href="#">6759</a> , <a href="#">548313</a> | SSX4         |

#### Other Names:

Protein SSX4;SSX4;SSX4A

#### Target/Specificity:

This SSX4 antibody is generated from rabbits immunized with a KLH conjugated synthetic peptide between 68-97 amino acids from the Central region of human SSX4.

#### Application Notes:

The suggested dilution is:

ELISA 1:1,000

Western blotting 1:100~500

#### Format:

Purified polyclonal antibody supplied in PBS with 0.09% (W/V) sodium azide. This antibody is purified through a protein A column, followed by peptide affinity purification.

#### Storage:

SSX4 Antibody (Center) can be refrigerated at 2-8°C for up to 6 months. For long term storage, place the at -20°C.

---

**Precautions:**

SSX4 Antibody (Center) is for research use only and not for use in diagnostic or therapeutic procedures.

---