

## CACNB1 Antibody (C-term)

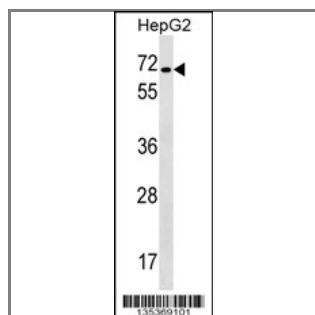
### Peptide Affinity Purified Rabbit Polyclonal Antibody (Pab)

Catalog #	Applications:	Reactivity:	Accessions:
AP16144b	WB, E	H	<a href="#">NP_954855.1</a> , <a href="#">NP_000714.3</a> , <a href="#">Q02641</a> , <a href="#">NP_954856.1</a>

Concentration:	Size:	Isotype:	Clone Name:
0.25 mg/ml	0.1 mg	Rabbit Ig	RB35369

#### Application Data:

Calculated MW: 65714 Da



CACNB1 Antibody (C-term) (Cat. #AP16144b) western blot analysis in HepG2 cell line lysates (35ug/lane). This demonstrates the CACNB1 antibody detected the CACNB1 protein (arrow).

Gene ID:	Gene Symbol:
<a href="#">782</a>	CACNB1

#### Other Names:

Voltage-dependent L-type calcium channel subunit beta-1;CACNB1;CACNLB1

#### Target/Specificity:

This CACNB1 antibody is generated from rabbits immunized with a KLH conjugated synthetic peptide between 542-572 amino acids from the C-terminal region of human CACNB1.

#### Application Notes:

The suggested dilution is:

ELISA 1:1,000

Western blotting 1:100~500

#### Format:

Purified polyclonal antibody supplied in PBS with 0.09% (W/V) sodium azide. This antibody is purified through a protein A column, followed by peptide affinity purification.

#### Storage:

CACNB1 Antibody (C-term) can be refrigerated at 2-8°C for up to 6 months. For long term storage, place the at -20°C.

---

**Precautions:**

CACNB1 Antibody (C-term) is for research use only and not for use in diagnostic or therapeutic procedures.

---