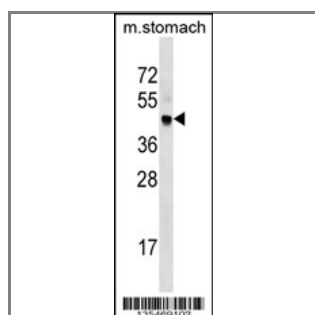


Mouse Cdk20 Antibody (Center)

Peptide Affinity Purified Rabbit Polyclonal Antibody (Pab)

Catalog #	Applications:	Reactivity:	Accessions:
AP16072c	WB, E	M	NP_444410.1 , Q9JHU3
Concentration:	Size:	Isotype:	Clone Name:
0.25 mg/ml	0.1 mg	Rabbit Ig	RB35469

Application Data: Calculated MW: 38379 Da



Mouse Cdk20 Antibody (Center) (Cat. #AP16072c) western blot analysis in mouse stomach tissue lysates (35ug/lane). This demonstrates the Cdk20 antibody detected the Cdk20 protein (arrow).

Gene ID:	Gene Symbol:
105278	Cdk20

Other Names:

Cell division protein kinase 20;Cdk20;Ccrk; Cdch

Target/Specificity:

This Mouse Cdk20 antibody is generated from rabbits immunized with a KLH conjugated synthetic peptide between 184-212 amino acids from the Central region of Mouse Cdk20.

Application Notes:

The suggested dilution is:

ELISA 1:1,000

Western blotting 1:100~500

Format:

Purified polyclonal antibody supplied in PBS with 0.09% (W/V) sodium azide. This antibody is purified through a protein A column, followed by peptide affinity purification.

Storage:

Mouse Cdk20 Antibody (Center) can be refrigerated at 2-8°C for up to 6 months. For long term

storage, place the at -20°C.

Precautions:

Mouse Cdk20 Antibody (Center) is for research use only and not for use in diagnostic or therapeutic procedures.
