

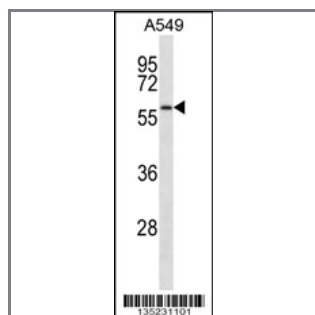
SMAD9 Antibody (Center)

Peptide Affinity Purified Rabbit Polyclonal Antibody (Pab)

Catalog #	Applications:	Reactivity:	Accessions:
AP14903c	WB, E	H	NP_005896.1 , O15198 , NP_001120689.1
Concentration:	Size:	Isotype:	Clone Name:
0.25 mg/ml	0.1 mg	Rabbit Ig	RB35231

Application Data:

Calculated MW: 52493 Da



SMAD9 Antibody (Center) (Cat. #AP14903c) western blot analysis in A549 cell line lysates (35ug/lane). This demonstrates the SMAD9 antibody detected the SMAD9 protein (arrow).

Gene ID:	Gene Symbol:
4093	SMAD9

Other Names:

Mothers against decapentaplegic homolog 9; SMAD9; MADH6; MADH9

Target/Specificity:

This SMAD9 antibody is generated from rabbits immunized with a KLH conjugated synthetic peptide between 199-228 amino acids from the Central region of human SMAD9.

Application Notes:

The suggested dilution is:

ELISA 1:1,000

Western blotting 1:100~500

Format:

Purified polyclonal antibody supplied in PBS with 0.09% (W/V) sodium azide. This antibody is purified through a protein A column, followed by peptide affinity purification.

Storage:

SMAD9 Antibody (Center) can be refrigerated at 2-8°C for up to 6 months. For long term storage, place the at -20°C.

Precautions:

SMAD9 Antibody (Center) is for research use only and not for use in diagnostic or therapeutic procedures.
