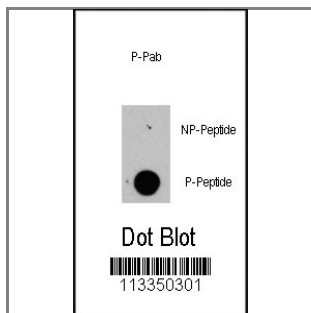


Phospho-Raptor-S863 Antibody

Peptide Affinity Purified Rabbit Polyclonal Antibody (Pab)

Catalog #	Applications:	Reactivity:	Accessions:
AP3495a	DB, E	H	Q8N122
Concentration:	Size:	Isotype:	Clone Name:
0.25 mg/ml	0.1 mg	Rabbit Ig	RB16569;RB24817

Application Data: **Calculated MW: 149038 Da**



Dot blot analysis of anti-raptor-pS863 Pab (RB13350) on nitrocellulose membrane. 50ng of Phospho-peptide or Non Phospho-peptide per dot were adsorbed. Antibody working concentrations are 0.5ug per ml.

Gene ID: [57521](#) **Gene Symbol:** RPTOR

Other Names:

Regulatory-associated protein of mTOR; Raptor; P150 target of rapamycin (TOR)-scaffold protein; KIAA1303

Target/Specificity:

This Phospho-Raptor-S863 antibody is generated from rabbits immunized with a KLH conjugated synthetic phosphopeptide corresponding to amino acid residues surrounding S863 of human Raptor.

Application Notes:

The suggested dilution is:

ELISA 1:1,000

Dot Blot 1:500

Format:

Purified polyclonal antibody supplied in PBS with 0.09% (W/V) sodium azide. This antibody is purified through a protein A column, followed by two-step phosphospecific peptide affinity purification.

Storage:

Maintain refrigerated at 2-8°C for up to 6 months. For long term storage store at -20°C in small aliquots to prevent freeze-thaw cycles.

Precautions:

Phospho-Raptor-S863 Antibody is for research use only and not for use in diagnostic or therapeutic procedures.
