

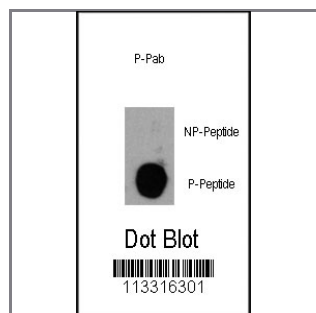
Phospho-PIK3CD-Y485 Antibody

Peptide Affinity Purified Rabbit Polyclonal Antibody (Pab)

Catalog #	Applications:	Reactivity:	Accessions:
AP3493a	DB, E	H	000329
Concentration:	Size:	Isotype:	Clone Name:
0.25 mg/ml	0.1 mg	Rabbit Ig	RB13316

Application Data:

Calculated MW: 119479 Da



Dot blot analysis of anti-PIK3CD-pY485 Pab (RB13316) on nitrocellulose membrane. 50ng of Phospho-peptide or Non Phospho-peptide per dot were adsorbed. Antibody working concentrations are 0.5ug per ml.

Gene ID:

[5293](#)

Gene Symbol:

PIK3CD

Other Names:

Phosphatidylinositol-4;5-bisphosphate 3-kinase catalytic subunit delta isoform; PI3-kinase p110 subunit delta; PtdIns-3-kinase p110; PI3K; p110delta; PIK3CD

Target/Specificity:

This Phospho-PIK3CD-Y485 antibody is generated from rabbits immunized with a KLH conjugated synthetic phosphopeptide corresponding to amino acid residues surrounding Y485 of human PIK3CD.

Application Notes:

The suggested dilution is:

ELISA 1:1,000

Dot Blot 1:500

Format:

Purified polyclonal antibody supplied in PBS with 0.09% (W/V) sodium azide. This antibody is purified through a protein A column, followed by two-step phosphospecific peptide affinity purification.

Storage:

Maintain refrigerated at 2-8°C for up to 6 months. For long term storage store at -20°C in small aliquots to prevent freeze-thaw cycles.

Precautions:

Phospho-PIK3CD-Y485 Antibody is for research use only and not for use in diagnostic or therapeutic procedures.
