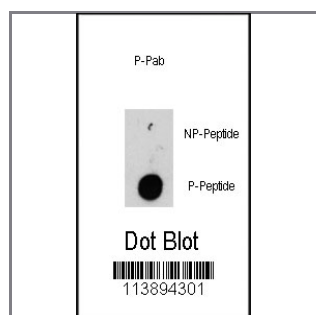


Phospho-ILK-T173 Antibody

Peptide Affinity Purified Rabbit Polyclonal Antibody (Pab)

Catalog #	Applications:	Reactivity:	Accessions:
AP3488a	DB, E	H	NP_004508 , Q13418
Concentration:	Size:	Isotype:	Clone Name:
0.25 mg/ml	0.1 mg	Rabbit Ig	RB13894

Application Data: **Calculated MW: 51288 Da**



Dot blot analysis of anti-ILK-pT173 Pab (RB13894) on nitrocellulose membrane. 50ng of Phospho-peptide or Non Phospho-peptide per dot were adsorbed. Antibody working concentrations are 0.5ug per ml.

Gene ID: [3611](#) **Gene Symbol:** ILK

Other Names:

Integrin-linked protein kinase; ILK-1; ILK-2; 59 kDa serine/threonine-protein kinase; p59ILK ; ILK1; ILK2

Target/Specificity:

This Phospho-ILK-T173 antibody is generated from rabbits immunized with a KLH conjugated synthetic phosphopeptide corresponding to amino acid residues surrounding T173 of human ILK.

Application Notes:

The suggested dilution is:

ELISA 1:1,000

Dot Blot 1:500

Format:

Purified polyclonal antibody supplied in PBS with 0.09% (W/V) sodium azide. This antibody is purified through a protein A column, followed by two-step phosphospecific peptide affinity purification.

Storage:

Maintain refrigerated at 2-8°C for up to 6 months. For long term storage store at -20°C in

small aliquots to prevent freeze-thaw cycles.

Precautions:

Phospho-ILK-T173 Antibody is for research use only and not for use in diagnostic or therapeutic procedures.
