

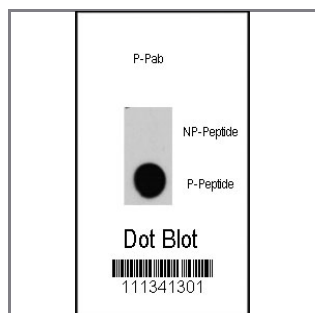
Phospho-RAF1-Y340 Antibody

Peptide Affinity Purified Rabbit Polyclonal Antibody (Pab)

Catalog #	Applications:	Reactivity:	Accessions:
AP3445a	DB, E	H	P04049

Concentration:	Size:	Isotype:	Clone Name:
0.25 mg/ml	0.1 mg	Rabbit Ig	RB11341

Application Data: **Calculated MW: 73052 Da**



Dot blot analysis of anti-RAF1-pY340 Phospho-specific Pab (RB11341) on nitrocellulose membrane. 50ng of Phospho-peptide or Non Phospho-peptide per dot were adsorbed. Antibody working concentrations are 0.5ug per ml.

Gene ID:	Gene Symbol:
5894	RAF1

Other Names:

RAF proto-oncogene serine/threonine-protein kinase; Raf-1; C-RAF; cRaf; RAF

Target/Specificity:

This Phospho-RAF1-Y340 antibody is generated from rabbits immunized with a KLH conjugated synthetic phosphopeptide corresponding to amino acid residues surrounding Y340 of human RAF1.

Application Notes:

The suggested dilution is:

ELISA 1:1,000

Dot Blot 1:500

Format:

Purified rabbit polyclonal antibody supplied in PBS with 0.09% (W/V) sodium azide. Then, the antibody fraction is peptide affinity purified in a 2-step procedure with the control and phosphorylated peptides. The phospho-specific antibody is eluted with high and low pH buffers and neutralized immediately, followed by dialysis against PBS.

Storage:

Maintain refrigerated at 2-8°C for up to 6 months. For long term storage store at -20°C in small aliquots to prevent freeze-thaw cycles.

Precautions:

Phospho-RAF1-Y340 Antibody is for research use only and not for use in diagnostic or therapeutic procedures.
