

YWHAG Antibody (N-term)

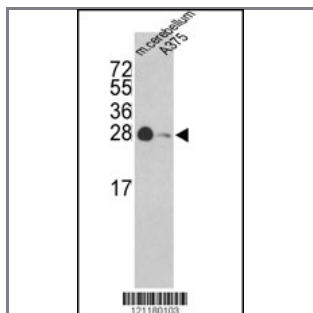
Peptide Affinity Purified Rabbit Polyclonal Antibody (Pab)

Catalog #	Applications:	Reactivity:	Accessions:
AP2943a	WB, FC, IHC, E	H, M	P61981

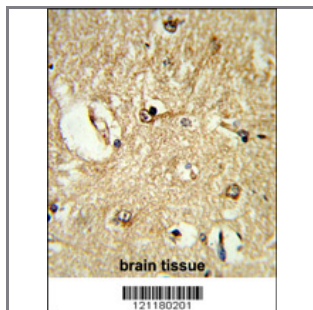
Concentration:	Size:	Isotype:	Clone Name:
0.25 mg/ml	0.1 mg	Rabbit Ig	RB21180

Application Data:

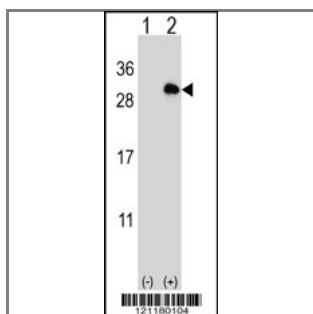
Calculated MW: 28303 Da



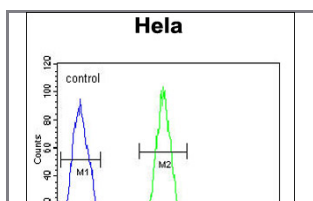
Western blot analysis of YWHAG Antibody (N-term) (Cat. #AP2943a) in A375 cell line and mouse cerebellum tissue lysates (35ug/lane). YWHAG (arrow) was detected using the purified Pab.



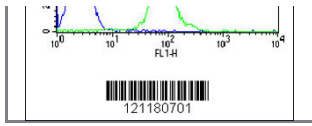
Formalin-fixed and paraffin-embedded human brain tissue reacted with YWHAG Antibody (N-term), which was peroxidase-conjugated to the secondary antibody, followed by DAB staining. This data demonstrates the use of this antibody for immunohistochemistry; clinical relevance has not been evaluated.



Western blot analysis of YWHAG (arrow) using rabbit polyclonal YWHAG Antibody (N-term) (Cat. #AP2943a). 293 cell lysates (2 ug/lane) either nontransfected (Lane 1) or transiently transfected (Lane 2) with the YWHAG gene.



YWHAG Antibody (N-term) (Cat. #AP2943a) flow cytometric analysis of HeLa cells (right histogram) compared to a negative control cell (left histogram). FITC-conjugated goat-anti-rabbit secondary antibodies were



used for the analysis.

Gene ID:

7532

Gene Symbol:

YWHAG

Other Names:

14-3-3 protein gamma; Protein kinase C inhibitor protein 1; KCIP-1; 14-3-3 protein gamma, N-terminally processed; YWHAG

Target/Specificity:

This YWHAG antibody is generated from rabbits immunized with a KLH conjugated synthetic peptide between 70~100 amino acids from the N-terminal region of human YWHAG.

Application Notes:

The suggested dilution is:

ELISA 1:1,000

Western blotting 1:100~500

Immunohistochemistry 1:50~100

Flow cytometric 1:10~50

Format:

Purified polyclonal antibody supplied in PBS with 0.09% (W/V) sodium azide. This antibody is purified through a protein A column, followed by peptide affinity purification.

Storage:

Maintain refrigerated at 2-8°C for up to 6 months. For long term storage store at -20°C in small aliquots to prevent freeze-thaw cycles.

Precautions:

YWHAG Antibody (N-term) is for research use only and not for use in diagnostic or therapeutic procedures.
