

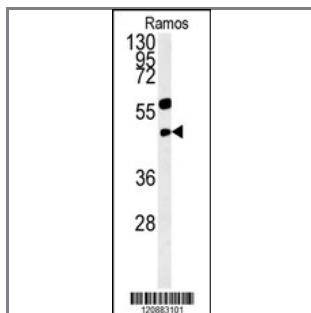
PHGDH Antibody (Center)

Peptide Affinity Purified Rabbit Polyclonal Antibody (Pab)

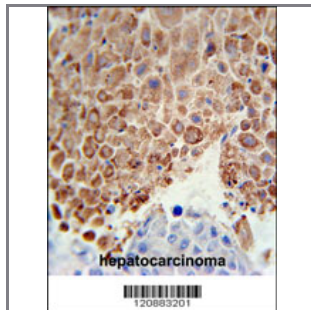
Catalog #	Applications:	Reactivity:	Accessions:
AP2936c	WB, FC, IHC, E	H	NP_006614 , O43175

Concentration:	Size:	Isotype:	Clone Name:
0.25 mg/ml	0.1 mg	Rabbit Ig	RB20883

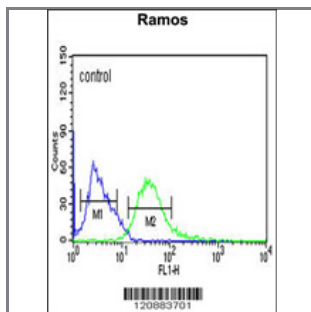
Application Data: Calculated MW: 56651 Da



PHGDH Antibody (Center) (Cat. #AP2936c) western blot analysis in Ramos cell line lysates (15ug/lane). This demonstrates the PHGDH antibody detected the PHGDH protein (arrow).



PHGDH Antibody (Center) (Cat. #AP2936c) immunohistochemistry analysis in formalin fixed and paraffin embedded human hepatocarcinoma followed by peroxidase conjugation of the secondary antibody and DAB staining. This data demonstrates the use of the PHGDH Antibody (Center) for immunohistochemistry. Clinical relevance has not been evaluated.



PHGDH Antibody (Center) (Cat. #AP2936c) flow cytometric analysis of Ramos cells (right histogram) compared to a negative control cell (left histogram). FITC-conjugated goat-anti-rabbit secondary antibodies were used for the analysis.

Gene ID:	Gene Symbol:
26227	PHGDH

Other Names:

D-3-phosphoglycerate dehydrogenase;PHGDH;PGDH3

Target/Specificity:

This PHGDH antibody is generated from rabbits immunized with a KLH conjugated synthetic peptide between 256-285 amino acids from the Central region of human PHGDH.

Application Notes:

The suggested dilution is:

ELISA 1:1,000

Western blotting 1:100~500

Immunohistochemistry 1:50~100

Flow cytometry 1:10~50

Format:

Purified polyclonal antibody supplied in PBS with 0.09% (W/V) sodium azide. This antibody is purified through a protein A column, followed by peptide affinity purification.

Storage:

Maintain refrigerated at 2-8°C for up to 6 months. For long term storage store at -20°C in small aliquots to prevent freeze-thaw cycles.

Precautions:

PHGDH Antibody (Center) is for research use only and not for use in diagnostic or therapeutic procedures.
