

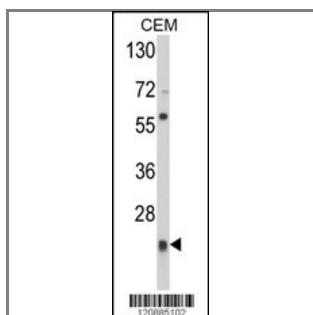
PRDX1 Antibody (Center)

Purified Rabbit Polyclonal Antibody (Pab)

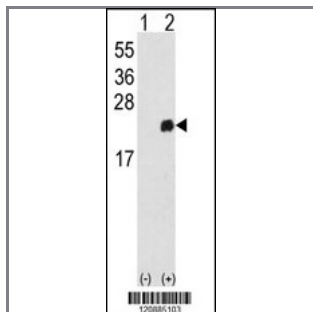
Catalog #	Applications:	Reactivity:	Accessions:
AP2924c	WB, IHC, FC, E	H	Q06830

Concentration:	Size:	Isotype:	Clone Name:
0.25 mg/ml	0.1 mg	Rabbit Ig	RB20885

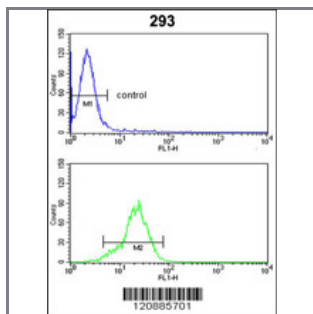
Application Data: Calculated MW: 22110 Da



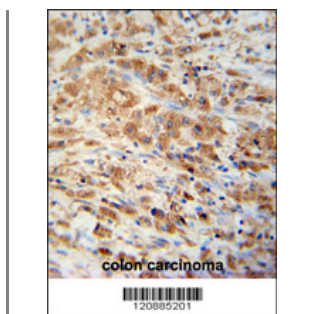
Western blot analysis of PRDX1 Antibody (Center) (Cat. #AP2924c) in CEM cell line lysates (35ug/lane). PRDX1 (arrow) was detected using the purified Pab.



Western blot analysis of PRDX1 (arrow) using rabbit polyclonal PRDX1 Antibody (Center) (Cat. #AP2924c). 293 cell lysates (2 ug/lane) either nontransfected (Lane 1) or transiently transfected with the PRDX1 gene (Lane 2) .



PRDX1 Antibody (Center) (Cat. #AP2924c) flow cytometric analysis of 293 cells (bottom histogram) compared to a negative control cell (top histogram). FITC-conjugated goat-anti-rabbit secondary antibodies were used for the analysis.



PRDX1 Antibody (Center) (Cat. #AP2924c) immunohistochemistry analysis in formalin fixed and paraffin embedded human colon carcinoma followed by peroxidase conjugation of the secondary antibody and DAB staining. This data demonstrates the use of the PRDX1 Antibody (Center) for immunohistochemistry. Clinical relevance has not been evaluated.

Gene ID:

5052

Gene Symbol:

PRDX1

Other Names:

Peroxiredoxin-1; Thioredoxin peroxidase 2; Thioredoxin-dependent peroxide reductase 2; Proliferation-associated gene protein; PAG; Natural killer cell-enhancing factor A; NKEF-A ; TDPX2; PAGB; PAGA; PRDX1

Target/Specificity:

This PRDX1 antibody is generated from rabbits immunized with a KLH conjugated synthetic peptide between 95~124 amino acids from the Center region of human PRDX1.

Application Notes:

The suggested dilution is:

ELISA 1:1,000

Western blotting 1:50~100

Flow cytometric 1:10~50

Immunohistochemistry 1:50~100

Format:

Purified polyclonal antibody supplied in PBS with 0.09% (W/V) sodium azide. This antibody is prepared by Saturated Ammonium Sulfate (SAS) precipitation followed by dialysis against PBS.

Storage:

Maintain refrigerated at 2-8°C for up to 6 months. For long term storage store at -20°C in small aliquots to prevent freeze-thaw cycles.

Precautions:

PRDX1 Antibody (Center) is for research use only and not for use in diagnostic or therapeutic procedures.
