

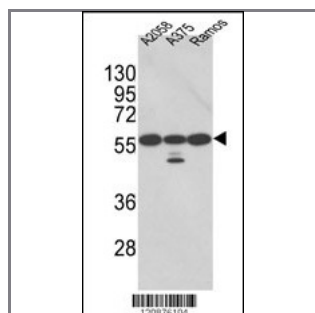
PDIA3 Antibody (Center)

Purified Rabbit Polyclonal Antibody (Pab)

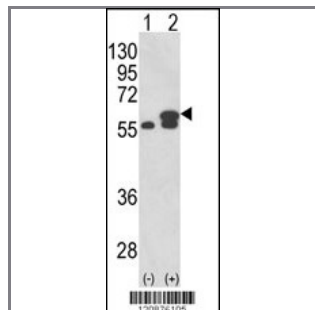
Catalog #	Applications:	Reactivity:	Accessions:
AP2922c	WB, IHC, FC, E	H	P30101

Concentration:	Size:	Isotype:	Clone Name:
0.25 mg/ml	0.1 mg	Rabbit Ig	RB20876

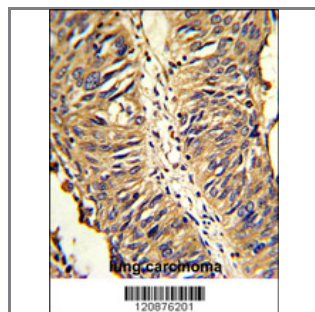
Application Data: Calculated MW: 56782 Da



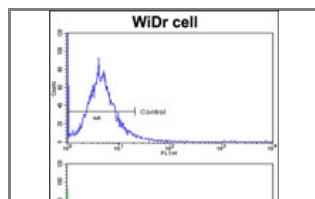
Western blot analysis of PDIA3 Antibody (Center) (Cat. #AP2922c) in A2058, A375, Ramos cell line lysates (35ug/lane). PDIA3 (arrow) was detected using the purified Pab.(2ug/ml)



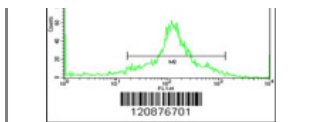
Western blot analysis of PDIA3 (arrow) using rabbit polyclonal PDIA3 Antibody (Center) (Cat. #AP2922c). 293 cell lysates (2 ug/lane) either nontransfected (Lane 1) or transiently transfected with the PDIA3 gene (Lane 2) .



Formalin-fixed and paraffin-embedded human lung carcinoma reacted with PDIA3 Antibody (Center), which was peroxidase-conjugated to the secondary antibody, followed by DAB staining. This data demonstrates the use of this antibody for immunohistochemistry; clinical relevance has not been evaluated.



Flow cytometric analysis of wdr cells using PDIA3 Antibody (Center)(bottom histogram) compared to a negative control cell (top histogram) FITC-conjugated goat-anti-rabbit secondary antibodies were used for the



analysis.

Gene ID:

2923

Gene Symbol:

PDIA3

Other Names:

Protein disulfide-isomerase A3; Disulfide isomerase ER-60; ERp60; 58 kDa microsomal protein; p58; ERp57; 58 kDa glucose-regulated protein; GRP58; ERP60; ERP57; PDIA3

Target/Specificity:

This PDIA3 antibody is generated from rabbits immunized with a KLH conjugated synthetic peptide between 199~228 amino acids from the Center region of human PDIA3.

Application Notes:

The suggested dilution is:

ELISA 1:1,000

Western blotting 1:50~100

Immunohistochemistry 1:50~100

Flow cytometric 1:10~50

Format:

Purified polyclonal antibody supplied in PBS with 0.09% (W/V) sodium azide. This antibody is prepared by Saturated Ammonium Sulfate (SAS) precipitation followed by dialysis against PBS.

Storage:

Maintain refrigerated at 2-8°C for up to 6 months. For long term storage store at -20°C in small aliquots to prevent freeze-thaw cycles.

Precautions:

PDIA3 Antibody (Center) is for research use only and not for use in diagnostic or therapeutic procedures.
