

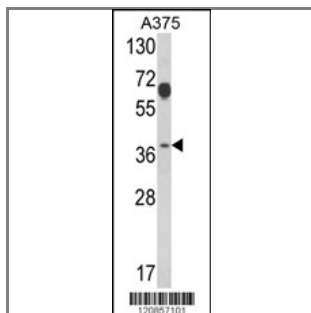
PSMD7 Antibody (N-term)

Purified Rabbit Polyclonal Antibody (Pab)

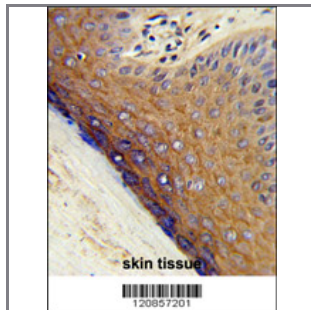
Catalog #	Applications:	Reactivity:	Accessions:
AP2916a	WB, IHC, FC, E	H	P51665

Concentration:	Size:	Isotype:	Clone Name:
0.25 mg/ml	0.1 mg	Rabbit Ig	RB20857

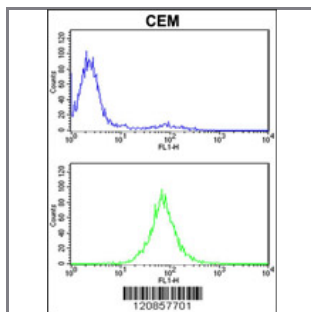
Application Data: **Calculated MW: 37025 Da**



Western blot analysis of PSMD7 Antibody (N-term) (Cat. #AP2916a) in A375 cell line lysates (35ug/lane). PSMD7 (arrow) was detected using the purified Pab.



Formalin-fixed and paraffin-embedded human skin tissue reacted with PSMD7 Antibody (N-term), which was peroxidase-conjugated to the secondary antibody, followed by DAB staining. This data demonstrates the use of this antibody for immunohistochemistry; clinical relevance has not been evaluated.



PSMD7 Antibody (N-term) (Cat. #AP2916a) flow cytometric analysis of CEM cells (bottom histogram) compared to a negative control cell (top histogram). FITC-conjugated goat-anti-rabbit secondary antibodies were used for the analysis.

Gene ID:	Gene Symbol:
5713	PSMD7

Other Names:

26S proteasome non-ATPase regulatory subunit 7; 26S proteasome regulatory subunit rpn8; 26S proteasome regulatory subunit S12; Proteasome subunit p40; Mov34 protein homolog; MOV34L; PSMD7

Target/Specificity:

This PSMD7 antibody is generated from rabbits immunized with a KLH conjugated synthetic peptide between 13~42 amino acids from the N-terminal region of human PSMD7.

Application Notes:

The suggested dilution is:

ELISA 1:1,000

Western blotting 1:50~100

Immunohistochemistry 1:50~100

Flow cytometric 1:10~50

Format:

Purified polyclonal antibody supplied in PBS with 0.09% (W/V) sodium azide. This antibody is prepared by Saturated Ammonium Sulfate (SAS) precipitation followed by dialysis against PBS.

Storage:

Maintain refrigerated at 2-8°C for up to 6 months. For long term storage store at -20°C in small aliquots to prevent freeze-thaw cycles.

Precautions:

PSMD7 Antibody (N-term) is for research use only and not for use in diagnostic or therapeutic procedures.
