

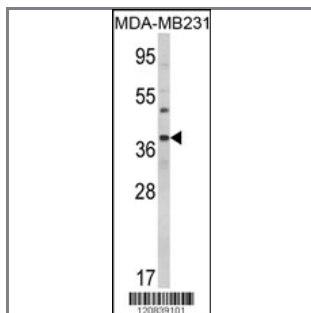
BAG1 Antibody (C-term)

Purified Rabbit Polyclonal Antibody (Pab)

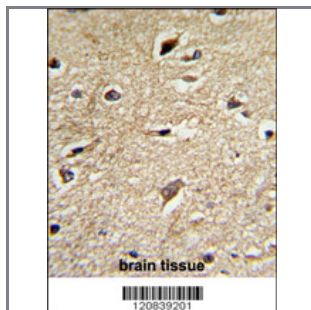
Catalog #	Applications:	Reactivity:	Accessions:
AP2912b	WB, IF, IHC, FC, E	H	Q99933

Concentration:	Size:	Isotype:	Clone Name:
0.25 mg/ml	0.1 mg	Rabbit Ig	RB20839

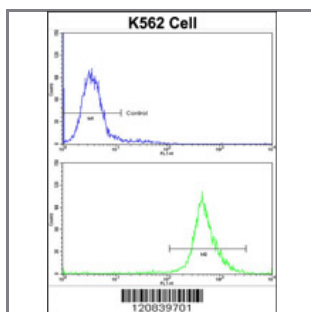
Application Data: Calculated MW: 38878 Da



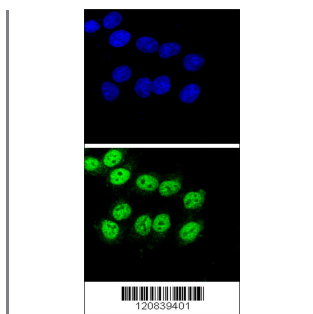
Western blot analysis of BAG1 Antibody (C-term) (Cat. #AP2912b) in MDA-MB231 cell line lysates (35ug/lane). BAG1 (arrow) was detected using the purified Pab.



Formalin-fixed and paraffin-embedded human brain tissue reacted with BAG1 Antibody (C-term), which was peroxidase-conjugated to the secondary antibody, followed by DAB staining. This data demonstrates the use of this antibody for immunohistochemistry; clinical relevance has not been evaluated.



Flow cytometric analysis of K562 cells using BAG1 Antibody (C-term)(bottom histogram) compared to a negative control cell (top histogram)FITC-conjugated goat-anti-rabbit secondary antibodies were used for the analysis.



Confocal immunofluorescent analysis of BAG1 Antibody (C-term)(Cat. #AP2912b) with HeLa cells followed by Alexa Fluor® 488-conjugated goat anti-rabbit IgG (green). DAPI was used to stain the cell nuclei (blue).

Gene ID:

573

Gene Symbol:

BAG1

Other Names:

BAG family molecular chaperone regulator 1; BAG-1; Bcl-2-associated athanogene 1; Glucocorticoid receptor-associated protein RAP46; HAP; BAG1

Target/Specificity:

This BAG1 antibody is generated from rabbits immunized with a KLH conjugated synthetic peptide between 264~294 amino acids from the C-terminal region of human BAG1.

Application Notes:

The suggested dilution is:

ELISA 1:1,000

Western blotting 1:50~100

Immunohistochemistry 1:50~100

Flow cytometric 1:10~50

Immunofluorescence 1:10~50

Format:

Purified polyclonal antibody supplied in PBS with 0.09% (W/V) sodium azide. This antibody is prepared by Saturated Ammonium Sulfate (SAS) precipitation followed by dialysis against PBS.

Storage:

Maintain refrigerated at 2-8°C for up to 6 months. For long term storage store at -20°C in small aliquots to prevent freeze-thaw cycles.

Precautions:

BAG1 Antibody (C-term) is for research use only and not for use in diagnostic or therapeutic procedures.
