

MDH1 Antibody (C-term)

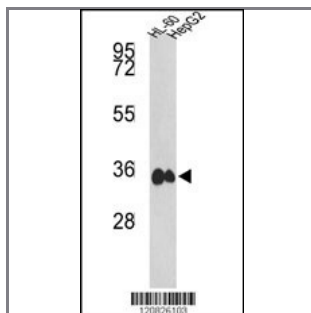
Purified Rabbit Polyclonal Antibody (Pab)

Catalog #	Applications:	Reactivity:	Accessions:
AP2908b	WB, FC, IHC, E	H	P40925

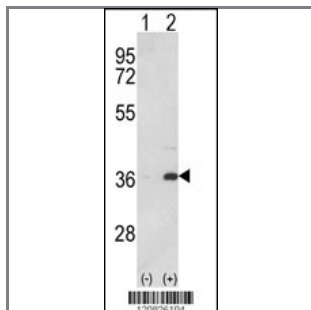
Concentration:	Size:	Isotype:	Clone Name:
0.25 mg/ml	0.1 mg	Rabbit Ig	RB20826

Application Data:

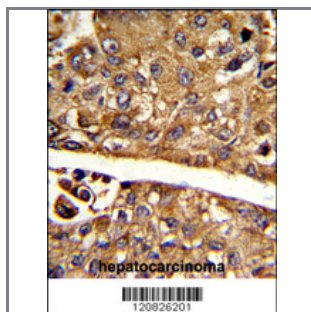
Calculated MW: 36426 Da



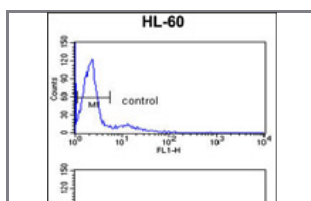
Western blot analysis of MDH1 Antibody (C-term) (Cat. #AP2908b) in HL-60, HepG2 cell line lysates (35ug/lane). MDH1 (arrow) was detected using the purified Pab.



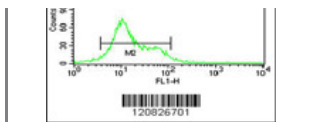
Western blot analysis of MDH1 (arrow) using rabbit polyclonal MDH1 Antibody (C-term) (Cat. #AP2908b). 293 cell lysates (2 ug/lane) either nontransfected (Lane 1) or transiently transfected with the MDH1 gene (Lane 2) .



Formalin-fixed and paraffin-embedded human hepatocarcinoma reacted with MDH1 Antibody (C-term), which was peroxidase-conjugated to the secondary antibody, followed by DAB staining. This data demonstrates the use of this antibody for immunohistochemistry; clinical relevance has not been evaluated.



MDH1 Antibody (C-term) (Cat. #AP2908b) flow cytometry analysis of HL-60 cells (bottom histogram) compared to a negative control cell (top histogram). FITC-conjugated goat-anti-rabbit secondary antibodies were



used for the analysis.

Gene ID:

4190

Gene Symbol:

MDH1

Other Names:

Malate dehydrogenase, cytoplasmic; Cytosolic malate dehydrogenase; MDHA; MDH1

Target/Specificity:

This MDH1 antibody is generated from rabbits immunized with a KLH conjugated synthetic peptide between 293~322 amino acids from the C-terminal region of human MDH1.

Application Notes:

The suggested dilution is:

ELISA 1:1,000

Western blotting 1:50~100

Immunohistochemistry 1:50~100

Flow cytometry 1:10~50

Format:

Purified polyclonal antibody supplied in PBS with 0.09% (W/V) sodium azide. This antibody is prepared by Saturated Ammonium Sulfate (SAS) precipitation followed by dialysis against PBS.

Storage:

Maintain refrigerated at 2-8°C for up to 6 months. For long term storage store at -20°C in small aliquots to prevent freeze-thaw cycles.

Precautions:

MDH1 Antibody (C-term) is for research use only and not for use in diagnostic or therapeutic procedures.
