

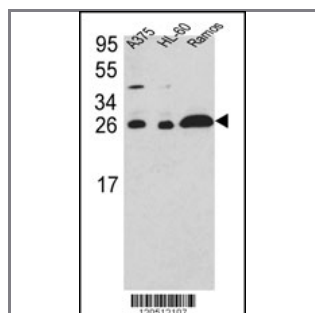
ARHGDI2 Antibody (C-term)

Purified Rabbit Polyclonal Antibody (Pab)

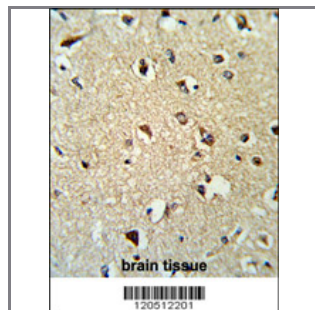
Catalog #	Applications:	Reactivity:	Accessions:
AP2894b	WB, FC, IHC, E	H	P52565
Concentration:	Size:	Isotype:	Clone Name:
0.25 mg/ml	0.1 mg	Rabbit Ig	RB20512

Application Data:

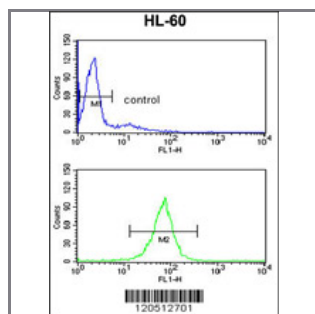
Calculated MW: 23207 Da



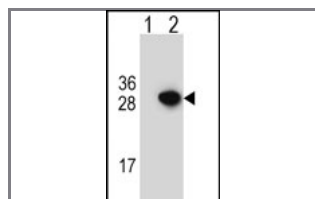
Western blot analysis of ARHGDI2 Antibody (C-term) (Cat. #AP2894b) in A375,HL-60,Ramos cell line lysates (35ug/lane). ARHGDI2 (arrow) was detected using the purified Pab.



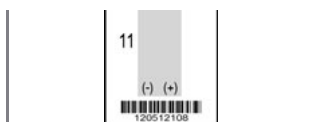
Formalin-fixed and paraffin-embedded human brain tissue reacted with ARHGDI2 Antibody (C-term), which was peroxidase-conjugated to the secondary antibody, followed by DAB staining. This data demonstrates the use of this antibody for immunohistochemistry; clinical relevance has not been evaluated.



ARHGDI2 Antibody (C-term) (Cat. #AP2894b) flow cytometry analysis of HL-60 cells (bottom histogram) compared to a negative control cell (top histogram).FITC-conjugated goat-anti-rabbit secondary antibodies were used for the analysis.



Western blot analysis of ARHGDI2 (arrow) using rabbit polyclonal ARHGDI2 Antibody (C-term) (Cat. #AP2894b). 293 cell lysates (2 ug/lane) either nontransfected (Lane 1) or transiently transfected (Lane 2) with the



ARHGDI1 gene.

Gene ID:

396

Gene Symbol:

ARHGDI1

Other Names:

Rho GDP-dissociation inhibitor 1; Rho GDI 1; Rho-GDI alpha; GDIA1; ARHGDI1

Target/Specificity:

This ARHGDI1 antibody is generated from rabbits immunized with a KLH conjugated synthetic peptide between 119~148 amino acids from the C-terminal region of human ARHGDI1.

Application Notes:

The suggested dilution is:

ELISA 1:1,000

Western blotting 1:50~100

Immunohistochemistry 1:50~100

Flow cytometry 1:10~50

Format:

Purified polyclonal antibody supplied in PBS with 0.09% (W/V) sodium azide. This antibody is prepared by Saturated Ammonium Sulfate (SAS) precipitation followed by dialysis against PBS.

Storage:

Maintain refrigerated at 2-8°C for up to 6 months. For long term storage store at -20°C in small aliquots to prevent freeze-thaw cycles.

Precautions:

ARHGDI1 Antibody (C-term) is for research use only and not for use in diagnostic or therapeutic procedures.
