

## ENOB Antibody (Center)

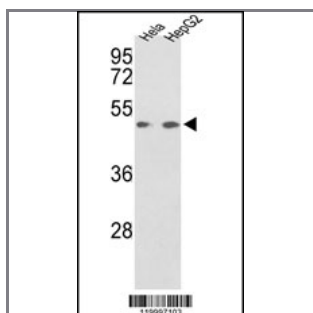
### Purified Rabbit Polyclonal Antibody (Pab)

| Catalog # | Applications:  | Reactivity: | Accessions:            |
|-----------|----------------|-------------|------------------------|
| AP2885c   | WB, FC, IHC, E | H           | <a href="#">P13929</a> |

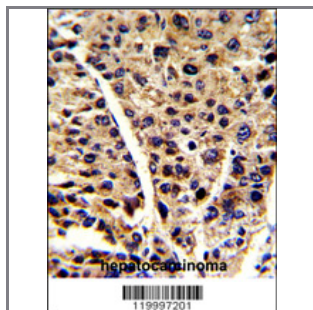
| Concentration: | Size:  | Isotype:  | Clone Name: |
|----------------|--------|-----------|-------------|
| 0.25 mg/ml     | 0.1 mg | Rabbit Ig | RB19997     |

#### Application Data:

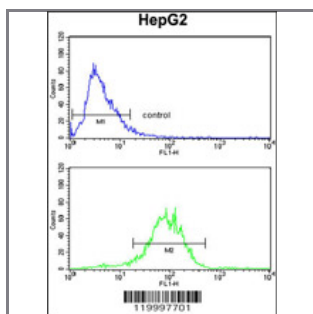
Calculated MW: 46987 Da



Western blot analysis of ENOB Antibody (Center) (Cat. #AP2885c) in HeLa, HepG2 cell line lysates (35ug/lane). ENOB (arrow) was detected using the purified Pab.



Formalin-fixed and paraffin-embedded human hepatocarcinoma reacted with ENOB Antibody (Center), which was peroxidase-conjugated to the secondary antibody, followed by DAB staining. This data demonstrates the use of this antibody for immunohistochemistry; clinical relevance has not been evaluated.



ENOB Antibody (Center) (Cat.#AP2885c) flow cytometry analysis of HepG2 cells (bottom histogram) compared to a negative control cell (top histogram). FITC-conjugated goat-anti-rabbit secondary antibodies were used for the analysis.

| Gene ID:             | Gene Symbol: |
|----------------------|--------------|
| <a href="#">2027</a> | ENO3         |

#### Other Names:

Beta-enolase; 2-phospho-D-glycerate hydro-lyase; Muscle-specific enolase; MSE; Skeletal muscle enolase; Enolase 3; ENO3

---

**Target/Specificity:**

This ENOB antibody is generated from rabbits immunized with a KLH conjugated synthetic peptide between 243~273 amino acids from the Center region of human ENOB.

---

**Application Notes:**

The suggested dilution is:

ELISA 1:1,000

Western blotting 1:50~100

Immunohistochemistry 1:50~100

Flow cytometric 1:10~50

---

**Format:**

Purified polyclonal antibody supplied in PBS with 0.09% (W/V) sodium azide. This antibody is prepared by Saturated Ammonium Sulfate (SAS) precipitation followed by dialysis against PBS.

---

**Storage:**

Maintain refrigerated at 2-8°C for up to 6 months. For long term storage store at -20°C in small aliquots to prevent freeze-thaw cycles.

---

**Precautions:**

ENOB Antibody (Center) is for research use only and not for use in diagnostic or therapeutic procedures.

---