

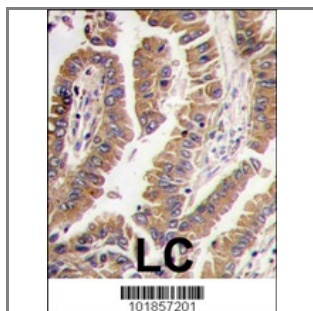
Bmp4 Antibody (N-term)

Purified Rabbit Polyclonal Antibody (Pab)

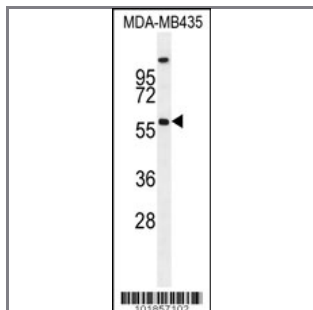
Catalog #	Applications:	Reactivity:	Accessions:
AP1715a	WB, IHC	H	NP_001193 , P12644
Concentration:	Size:	Isotype:	Clone Name:
0.25 mg/ml	0.1 mg	Rabbit Ig	RB1857

Application Data:

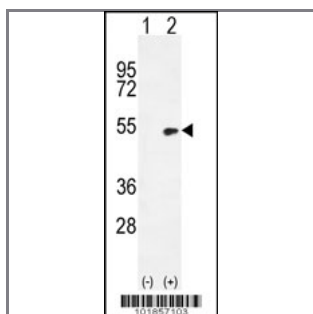
Calculated MW: 46555 Da



Formalin-fixed and paraffin-embedded human lung carcinoma tissue reacted with Bmp4 antibody (N-term), which was peroxidase-conjugated to the secondary antibody, followed by DAB staining. This data demonstrates the use of this antibody for immunohistochemistry; clinical relevance has not been evaluated.



Bmp4 Antibody (G20) (Cat. #AP1715a) western blot analysis in MDA-MB435 cell line lysates (35ug/lane). This demonstrates the Bmp4 antibody detected the Bmp4 protein (arrow).



Western blot analysis of Bmp4 (arrow) using rabbit polyclonal Bmp4 Antibody (G20) (Cat. #AP1715a). 293 cell lysates (2 ug/lane) either nontransfected (Lane 1) or transiently transfected (Lane 2) with the Bmp4 gene.

Gene ID: [652](#)
Gene Symbol: BMP4

Other Names:

Target/Specificity:

This Bmp4 antibody is generated from rabbits immunized with a KLH conjugated synthetic peptide between 12~42 amino acids from the N-terminal region of human Bmp4.

Application Notes:

The suggested dilution is:

ELISA 1:1,000

Western blotting 1:50~100

Immunohistochemistry 1:10~50

Format:

Purified polyclonal antibody supplied in PBS with 0.09% (W/V) sodium azide. This antibody is purified through a protein G column, eluted with high and low pH buffers and neutralized immediately, followed by dialysis against PBS.

Storage:

Maintain refrigerated at 2-8°C for up to 6 months. For long term storage store at -20°C in small aliquots to prevent freeze-thaw cycles.

Precautions:

Bmp4 Antibody (N-term) is for research use only and not for use in diagnostic or therapeutic procedures.
