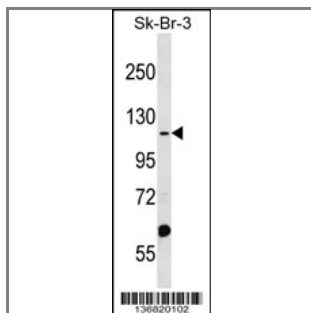


MTMR4 Antibody (Center)

Peptide Affinity Purified Rabbit Polyclonal Antibody (Pab)

Catalog #	Applications:	Reactivity:	Accessions:
AP17037c	WB, E	H	Q9NYA4 , NP_004678.3
Concentration:	Size:	Isotype:	Clone Name:
0.25 mg/ml	0.1 mg	Rabbit Ig	RB36820

Application Data: Calculated MW: 133353 Da



MTMR4 Antibody (Center) (Cat. #AP17037c) western blot analysis in SK-BR-3 cell line lysates (35ug/lane). This demonstrates the MTMR4 antibody detected the MTMR4 protein (arrow).

Gene ID:	Gene Symbol:
9110	MTMR4

Other Names:

Myotubularin-related protein 4; MTMR4; KIAA0647; ZFYVE11

Target/Specificity:

This MTMR4 antibody is generated from rabbits immunized with a KLH conjugated synthetic peptide between 694-723 amino acids from the Central region of human MTMR4.

Application Notes:

The suggested dilution is:
 ELISA 1:1,000
 Western blotting 1:100~500

Format:

Purified polyclonal antibody supplied in PBS with 0.09% (W/V) sodium azide. This antibody is purified through a protein A column, followed by peptide affinity purification.

Storage:

MTMR4 Antibody (Center) can be refrigerated at 2-8°C for up to 6 months. For long term storage,

place the at -20°C.

Precautions:

MTMR4 Antibody (Center) is for research use only and not for use in diagnostic or therapeutic procedures.
