

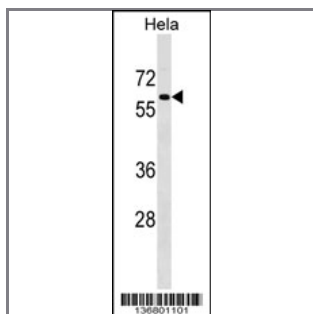
## PAF1 Antibody (C-term)

### Peptide Affinity Purified Rabbit Polyclonal Antibody (Pab)

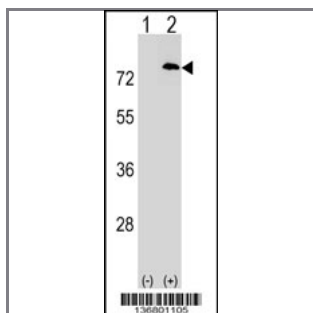
Catalog #	Applications:	Reactivity:	Accessions:
AP17025b	WB, E	H	<a href="#">NP_061961.2</a> , <a href="#">Q8N7H5</a>
Concentration:	Size:	Isotype:	Clone Name:
0.25 mg/ml	0.1 mg	Rabbit Ig	RB36801

#### Application Data:

Calculated MW: 59976 Da



PAF1 Antibody (C-term) (Cat. #AP17025b) western blot analysis in HeLa cell line lysates (35ug/lane). This demonstrates the PAF1 antibody detected the PAF1 protein (arrow).



Western blot analysis of PAF1 (arrow) using rabbit polyclonal PAF1 Antibody (C-term) (Cat. #AP17025b). 293 cell lysates (2 ug/lane) either nontransfected (Lane 1) or transiently transfected (Lane 2) with the PAF1 gene.

Gene ID:	Gene Symbol:
<a href="#">54623</a>	PAF1

#### Other Names:

RNA polymerase II-associated factor 1 homolog;PAF1;PD2

#### Target/Specificity:

This PAF1 antibody is generated from rabbits immunized with a KLH conjugated synthetic peptide between 438-467 amino acids from the C-terminal region of human PAF1.

#### Application Notes:

The suggested dilution is:

ELISA 1:1,000  
Western blotting 1:100~500

---

**Format:**

Purified polyclonal antibody supplied in PBS with 0.09% (W/V) sodium azide. This antibody is purified through a protein A column, followed by peptide affinity purification.

---

**Storage:**

PAF1 Antibody (C-term) can be refrigerated at 2-8°C for up to 6 months. For long term storage, place the at -20°C.

---

**Precautions:**

PAF1 Antibody (C-term) is for research use only and not for use in diagnostic or therapeutic procedures.

---