

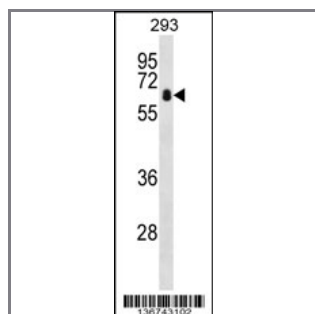
ZBTB7B Antibody (Center)

Peptide Affinity Purified Rabbit Polyclonal Antibody (Pab)

Catalog #	Applications:	Reactivity:	Accessions:
AP16999c	WB, E	H	XP_002345287.1 , NP_056956.2 , XP_002345288.1 , O15156

Concentration:	Size:	Isotype:	Clone Name:
0.25 mg/ml	0.1 mg	Rabbit Ig	RB36743

Application Data: Calculated MW: 58027 Da



ZBTB7B Antibody (Center) (Cat. #AP16999c) western blot analysis in 293 cell line lysates (35ug/lane). This demonstrates the ZBTB7B antibody detected the ZBTB7B protein (arrow).

Gene ID:	Gene Symbol:
100293130 , 51043	ZBTB7B

Other Names:

Zinc finger and BTB domain-containing protein 7B; ZBTB7B; ZBTB15; ZFP67; ZNF857B

Target/Specificity:

This ZBTB7B antibody is generated from rabbits immunized with a KLH conjugated synthetic peptide between 314-343 amino acids from the Central region of human ZBTB7B.

Application Notes:

The suggested dilution is:

ELISA 1:1,000

Western blotting 1:100~500

Format:

Purified polyclonal antibody supplied in PBS with 0.09% (W/V) sodium azide. This antibody is purified through a protein A column, followed by peptide affinity purification.

Storage:

ZBTB7B Antibody (Center) can be refrigerated at 2-8°C for up to 6 months. For long term storage, place the at -20°C.

Precautions:

ZBTB7B Antibody (Center) is for research use only and not for use in diagnostic or therapeutic procedures.
