

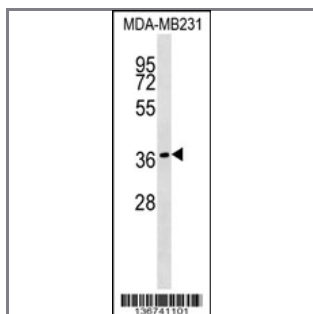
## HEYL Antibody (N-term)

### Peptide Affinity Purified Rabbit Polyclonal Antibody (Pab)

Catalog #	Applications:	Reactivity:	Accessions:
AP16997a	WB, E	H	<a href="#">NP_055386.1</a> , <a href="#">Q9NQ87</a>
Concentration:	Size:	Isotype:	Clone Name:
0.25 mg/ml	0.1 mg	Rabbit Ig	RB36741

#### Application Data:

Calculated MW: 35087 Da



HEYL Antibody (N-term) (Cat. #AP16997a) western blot analysis in MDA-MB231 cell line lysates (35ug/lane). This demonstrates the HEYL antibody detected the HEYL protein (arrow).

#### Gene ID:

[26508](#)

#### Gene Symbol:

HEYL

#### Other Names:

Hairy/enhancer-of-split related with YRPW motif-like protein;HEYL;BHLHB33; HRT3

#### Target/Specificity:

This HEYL antibody is generated from rabbits immunized with a KLH conjugated synthetic peptide between 25-54 amino acids from the N-terminal region of human HEYL.

#### Application Notes:

The suggested dilution is:

ELISA 1:1,000

Western blotting 1:100~500

#### Format:

Purified polyclonal antibody supplied in PBS with 0.09% (W/V) sodium azide. This antibody is purified through a protein A column, followed by peptide affinity purification.

#### Storage:

HEYL Antibody (N-term) can be refrigerated at 2-8°C for up to 6 months. For long term storage, place the at -20°C.

---

**Precautions:**

HEYL Antibody (N-term) is for research use only and not for use in diagnostic or therapeutic procedures.

---