

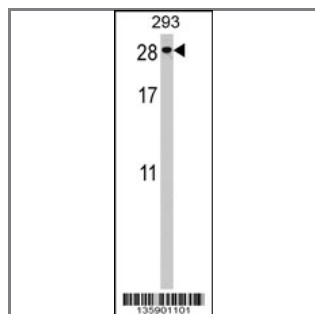
PTTG2 Antibody (Center)

Peptide Affinity Purified Rabbit Polyclonal Antibody (Pab)

Catalog #	Applications:	Reactivity:	Accessions:
AP16911c	WB, E	H	Q9NZH5 , NP_006598.2
Concentration:	Size:	Isotype:	Clone Name:
0.25 mg/ml	0.1 mg	Rabbit Ig	RB35901

Application Data:

Calculated MW: 22243 Da



PTTG2 Antibody (Center) (Cat. #AP16911c) western blot analysis in 293 cell line lysates (35ug/lane). This demonstrates the PTTG2 antibody detected the PTTG2 protein (arrow).

Gene ID:	Gene Symbol:
10744	PTTG2

Other Names:

Securin-2;PTTG2;

Target/Specificity:

This PTTG2 antibody is generated from rabbits immunized with a KLH conjugated synthetic peptide between 55-84 amino acids from the Central region of human PTTG2.

Application Notes:

The suggested dilution is:

ELISA 1:1,000

Western blotting 1:100~500

Format:

Purified polyclonal antibody supplied in PBS with 0.09% (W/V) sodium azide. This antibody is purified through a protein A column, followed by peptide affinity purification.

Storage:

PTTG2 Antibody (Center) can be refrigerated at 2-8°C for up to 6 months. For long term storage, place the at -20°C.

Precautions:

PTTG2 Antibody (Center) is for research use only and not for use in diagnostic or therapeutic procedures.
