

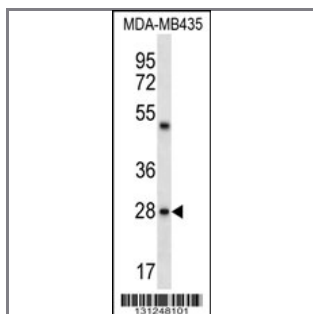
CDRT15L2 Antibody (C-term)

Peptide Affinity Purified Rabbit Polyclonal Antibody (Pab)

Catalog #	Applications:	Reactivity:	Accessions:
AP12513b	WB, E	H	A8MXV6 , NP_001177719.1
Concentration:	Size:	Isotype:	Clone Name:
0.25 mg/ml	0.1 mg	Rabbit Ig	RB31248

Application Data:

Calculated MW: 30100 Da



CDRT15L2 Antibody (C-term) (Cat. #AP12513b) western blot analysis in MDA-MB435 cell line lysates (35ug/lane). This demonstrates the CDRT15L2 antibody detected the CDRT15L2 protein (arrow).

Gene ID:	Gene Symbol:
256223	CDRT15L2

Other Names:

CMT1A duplicated region transcript 15 protein-like protein; CDRT15L2;

Target/Specificity:

This CDRT15L2 antibody is generated from rabbits immunized with a KLH conjugated synthetic peptide between 214-243 amino acids from the C-terminal region of human CDRT15L2.

Application Notes:

The suggested dilution is:

ELISA 1:1,000

Western blotting 1:100~500

Format:

Purified polyclonal antibody supplied in PBS with 0.09% (W/V) sodium azide. This antibody is purified through a protein A column, followed by peptide affinity purification.

Storage:

CDRT15L2 Antibody (C-term) can be refrigerated at 2-8°C for up to 6 months. For long term storage, place the at -20°C.

Precautions:

CDRT15L2 Antibody (C-term) is for research use only and not for use in diagnostic or therapeutic procedures.
