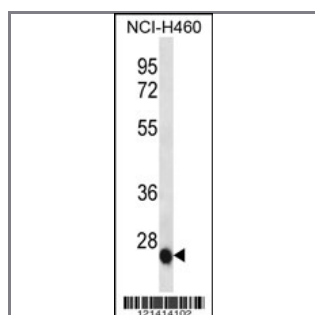


## IL6 Antibody (Center)

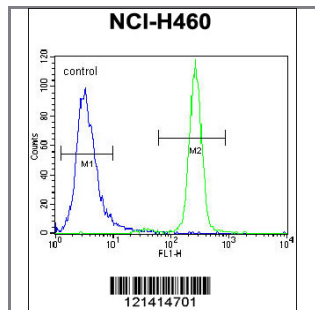
### Peptide Affinity Purified Rabbit Polyclonal Antibody (Pab)

Catalog #	Applications:	Reactivity:	Accessions:
AP12474c	WB, FC, E	H	<a href="#">P05231</a> , <a href="#">NP_000591.1</a>
Concentration:	Size:	Isotype:	Clone Name:
0.25 mg/ml	0.1 mg	Rabbit Ig	RB21414

#### Application Data: Calculated MW: 23718 Da



IL6 Antibody (Center) (Cat. #AP12474c) western blot analysis in NCI-H460 cell line lysates (35ug/lane). This demonstrates the IL6 antibody detected the IL6 protein (arrow).



IL6 Antibody (Center) (Cat. #AP12474c) flow cytometric analysis of NCI-H460 cells (right histogram) compared to a negative control cell (left histogram). FITC-conjugated goat-anti-rabbit secondary antibodies were used for the analysis.

Gene ID:	Gene Symbol:
<a href="#">3569</a>	IL6

#### Other Names:

Interleukin-6; IL6; IFNB2

#### Target/Specificity:

This IL6 antibody is generated from rabbits immunized with a KLH conjugated synthetic peptide between 26-55 amino acids from the Central region of human IL6.

#### Application Notes:

The suggested dilution is:  
ELISA 1:1,000

Western blotting 1:100~500

Flow cytometric 1:10~50

---

**Format:**

Purified polyclonal antibody supplied in PBS with 0.09% (W/V) sodium azide. This antibody is purified through a protein A column, followed by peptide affinity purification.

---

**Storage:**

IL6 Antibody (Center) can be refrigerated at 2-8°C for up to 6 months. For long term storage, place the at -20°C.

---

**Precautions:**

IL6 Antibody (Center) is for research use only and not for use in diagnostic or therapeutic procedures.

---