

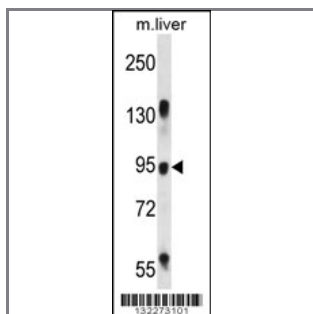
## RASAL1 Antibody (Center)

### Peptide Affinity Purified Rabbit Polyclonal Antibody (Pab)

Catalog #	Applications:	Reactivity:	Accessions:
AP12460c	WB, E	H(predict), M	<a href="#">NP_004649.2</a> , <a href="#">O95294</a> , <a href="#">NP_001180450.1</a>
Concentration:	Size:	Isotype:	Clone Name:
0.25 mg/ml	0.1 mg	Rabbit Ig	RB32273

#### Application Data:

Calculated MW: 90016 Da



RASAL1 Antibody (Center) (Cat. #AP12460c) western blot analysis in mouse liver tissue lysates (35ug/lane). This demonstrates the RASAL1 antibody detected the RASAL1 protein (arrow).

Gene ID:	Gene Symbol:
<a href="#">8437</a>	RASAL1

#### Other Names:

RASAL1;RasGAP-activating-like protein 1;RASAL

#### Target/Specificity:

This RASAL1 antibody is generated from rabbits immunized with a KLH conjugated synthetic peptide between 308-337 amino acids from the Central region of human RASAL1.

#### Application Notes:

The suggested dilution is:

ELISA 1:1,000

Western blotting 1:100~500

#### Format:

Purified polyclonal antibody supplied in PBS with 0.09% (W/V) sodium azide. This antibody is purified through a protein A column, followed by peptide affinity purification.

#### Storage:

RASAL1 Antibody (Center) can be refrigerated at 2-8°C for up to 6 months. For long term storage, place the at -20°C.

---

**Precautions:**

RASAL1 Antibody (Center) is for research use only and not for use in diagnostic or therapeutic procedures.

---