

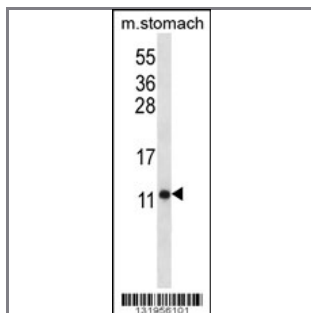
ATP5J Antibody (Center)

Peptide Affinity Purified Rabbit Polyclonal Antibody (Pab)

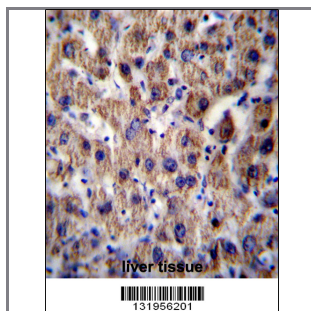
Catalog #	Applications:	Reactivity:	Accessions:
AP12457c	WB, IHC, E	H(predict), M	NP_001003701.1 , NP_001003696.1 , NP_001003703.1 , P18859 , NP_001003697.1 , NP_001676.2

Concentration:	Size:	Isotype:	Clone Name:
0.25 mg/ml	0.1 mg	Rabbit Ig	RB31956

Application Data: Calculated MW: 12588 Da



ATP5J Antibody (Center) (Cat. #AP12457c) western blot analysis in mouse stomach tissue lysates (35ug/lane). This demonstrates the ATP5J antibody detected the ATP5J protein (arrow).



ATP5J Antibody (Center) (Cat. #AP12457c) immunohistochemistry analysis in formalin fixed and paraffin embedded human liver tissue followed by peroxidase conjugation of the secondary antibody and DAB staining. This data demonstrates the use of ATP5J Antibody (Center) for immunohistochemistry. Clinical relevance has not been evaluated.

Gene ID:	Gene Symbol:
522	ATP5J

Other Names:

ATP5J; ATP synthase-coupling factor 6, mitochondrial; ATP5A; ATPM

Target/Specificity:

This ATP5J antibody is generated from rabbits immunized with a KLH conjugated synthetic peptide

between 27-56 amino acids from the Central region of human ATP5J.

Application Notes:

The suggested dilution is:

ELISA 1:1,000

Western blotting 1:100~500

Immunohistochemistry 1:10~50

Format:

Purified polyclonal antibody supplied in PBS with 0.09% (W/V) sodium azide. This antibody is purified through a protein A column, followed by peptide affinity purification.

Storage:

ATP5J Antibody (Center) can be refrigerated at 2-8°C for up to 6 months. For long term storage, place the at -20°C.

Precautions:

ATP5J Antibody (Center) is for research use only and not for use in diagnostic or therapeutic procedures.
