

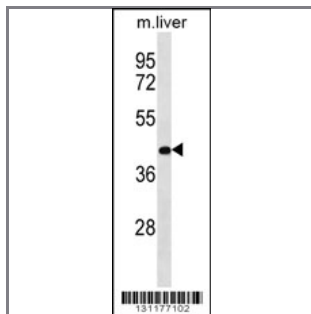
RASSF10 Antibody (Center)

Peptide Affinity Purified Rabbit Polyclonal Antibody (Pab)

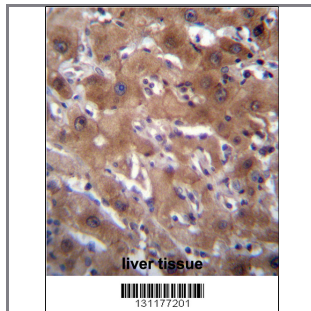
Catalog #	Applications:	Reactivity:	Accessions:
AP12444c	WB, IHC, E	H(predict), M	NP_001073990.2 , A6NK89
Concentration:	Size:	Isotype:	Clone Name:
0.25 mg/ml	0.1 mg	Rabbit Ig	RB31177

Application Data:

Calculated MW: 47kd isoform2. 56900 Da



RASSF10 Antibody (Center) (Cat. #AP12444c) western blot analysis in mouse liver tissue lysates (35ug/lane). This demonstrates the RASSF10 antibody detected the RASSF10 protein (arrow).



RASSF10 Antibody (Center) (Cat. #AP12444c) immunohistochemistry analysis in formalin fixed and paraffin embedded human liver tissue followed by peroxidase conjugation of the secondary antibody and DAB staining. This data demonstrates the use of RASSF10 Antibody (Center) for immunohistochemistry. Clinical relevance has not been evaluated.

Gene ID:	Gene Symbol:
644943	RASSF10

Other Names:

RASSF10; Ras association domain-containing protein 10;

Target/Specificity:

This RASSF10 antibody is generated from rabbits immunized with a KLH conjugated synthetic peptide between 229-259 amino acids from the Central region of human RASSF10.

Application Notes:

The suggested dilution is:

ELISA 1:1,000
Western blotting 1:100~500
Immunohistochemistry 1:10~50

Format:

Purified polyclonal antibody supplied in PBS with 0.09% (W/V) sodium azide. This antibody is purified through a protein A column, followed by peptide affinity purification.

Storage:

RASSF10 Antibody (Center) can be refrigerated at 2-8°C for up to 6 months. For long term storage, place the at -20°C.

Precautions:

RASSF10 Antibody (Center) is for research use only and not for use in diagnostic or therapeutic procedures.
