

TCF7L2 Antibody (N-term)

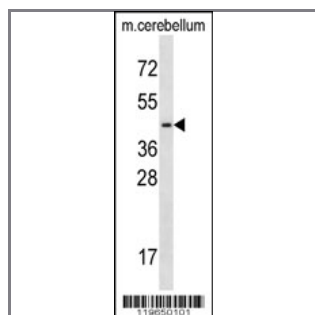
Peptide Affinity Purified Rabbit Polyclonal Antibody (Pab)

Catalog #	Applications:	Reactivity:	Accessions:
AP12416a	WB, E	H(predict), M	NP_001139756.1 , Q9NQB0 , NP_001139746.1

Concentration:	Size:	Isotype:	Clone Name:
0.25 mg/ml	0.1 mg	Rabbit Ig	RB19650

Application Data:

Calculated MW: 51kd Isoform 9. 67919 Da



TCF7L2 Antibody (N-term) (Cat. #AP12416a) western blot analysis in mouse cerebellum tissue lysates (35ug/lane). This demonstrates the TCF7L2 antibody detected the TCF7L2 protein (arrow).

Gene ID:	Gene Symbol:
6934	TCF7L2

Other Names:

TCF7L2; Transcription factor 7-like 2; TCF4

Target/Specificity:

This TCF7L2 antibody is generated from rabbits immunized with a KLH conjugated synthetic peptide between 60-90 amino acids from the N-terminal region of human TCF7L2.

Application Notes:

The suggested dilution is:

ELISA 1:1,000

Western blotting 1:100~500

Format:

Purified polyclonal antibody supplied in PBS with 0.09% (W/V) sodium azide. This antibody is purified through a protein A column, followed by peptide affinity purification.

Storage:

TCF7L2 Antibody (N-term) can be refrigerated at 2-8°C for up to 6 months. For long term storage, place the at -20°C.

Precautions:

TCF7L2 Antibody (N-term) is for research use only and not for use in diagnostic or therapeutic procedures.
