

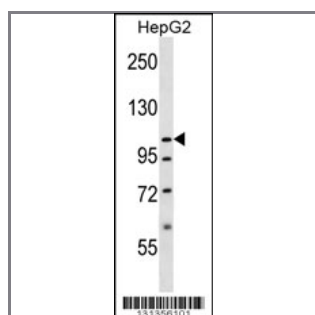
SLC12A7 Antibody (N-term)

Peptide Affinity Purified Rabbit Polyclonal Antibody (Pab)

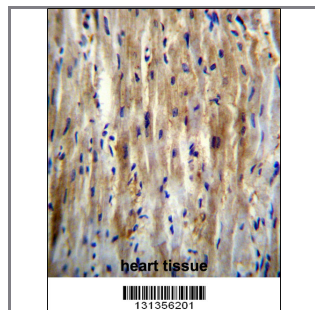
Catalog #	Applications:	Reactivity:	Accessions:
AP12392a	WB, IHC, E	H	NP_006589.2 , Q9Y666
Concentration:	Size:	Isotype:	Clone Name:
0.25 mg/ml	0.1 mg	Rabbit Ig	RB31356

Application Data:

Calculated MW: 119106 Da



SLC12A7 Antibody (N-term) (Cat. #AP12392a) western blot analysis in HepG2 cell line lysates (35ug/lane). This demonstrates the SLC12A7 antibody detected the SLC12A7 protein (arrow).



SLC12A7 Antibody (N-term) (Cat. #AP12392a) immunohistochemistry analysis in formalin fixed and paraffin embedded human heart tissue followed by peroxidase conjugation of the secondary antibody and DAB staining. This data demonstrates the use of SLC12A7 Antibody (N-term) for immunohistochemistry. Clinical relevance has not been evaluated.

Gene ID:	Gene Symbol:
10723	SLC12A7

Other Names:

SLC12A7; Solute carrier family 12 member 7; KCC4

Target/Specificity:

This SLC12A7 antibody is generated from rabbits immunized with a KLH conjugated synthetic peptide between 96-125 amino acids from the N-terminal region of human SLC12A7.

Application Notes:

The suggested dilution is:
ELISA 1:1,000

Western blotting 1:100~500
Immunohistochemistry 1:10~50

Format:

Purified polyclonal antibody supplied in PBS with 0.09% (W/V) sodium azide. This antibody is purified through a protein A column, followed by peptide affinity purification.

Storage:

SLC12A7 Antibody (N-term) can be refrigerated at 2-8°C for up to 6 months. For long term storage, place the at -20°C.

Precautions:

SLC12A7 Antibody (N-term) is for research use only and not for use in diagnostic or therapeutic procedures.
