

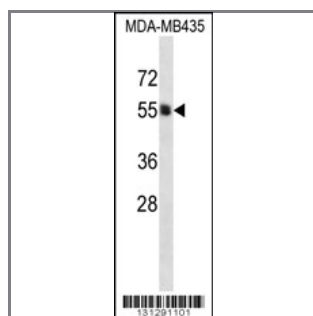
## PIGA Antibody (C-term)

### Peptide Affinity Purified Rabbit Polyclonal Antibody (Pab)

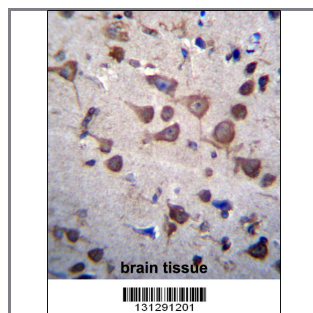
Catalog #	Applications:	Reactivity:	Accessions:
AP12378b	WB, IHC, E	H	<a href="#">P37287</a> , <a href="#">NP_065206.3</a> , <a href="#">NP_002632.1</a>
Concentration:	Size:	Isotype:	Clone Name:
0.25 mg/ml	0.1 mg	Rabbit Ig	RB31291

#### Application Data:

Calculated MW: 54127 Da



PIGA Antibody (C-term) (Cat. #AP12378b) western blot analysis in MDA-MB435 cell line lysates (35ug/lane). This demonstrates the PIGA antibody detected the PIGA protein (arrow).



PIGA Antibody (C-term) (Cat. #AP12378b) immunohistochemistry analysis in formalin fixed and paraffin embedded human brain tissue followed by peroxidase conjugation of the secondary antibody and DAB staining. This data demonstrates the use of PIGA Antibody (C-term) for immunohistochemistry. Clinical relevance has not been evaluated.

Gene ID:	Gene Symbol:
<a href="#">5277</a>	PIGA

#### Other Names:

PIGA; Phosphatidylinositol N-acetylglucosaminyltransferase subunit A;

#### Target/Specificity:

This PIGA antibody is generated from rabbits immunized with a KLH conjugated synthetic peptide between 147-177 amino acids from the C-terminal region of human PIGA.

#### Application Notes:

The suggested dilution is:

ELISA 1:1,000  
Western blotting 1:100~500  
Immunohistochemistry 1:10~50

---

**Format:**

Purified polyclonal antibody supplied in PBS with 0.09% (W/V) sodium azide. This antibody is purified through a protein A column, followed by peptide affinity purification.

---

**Storage:**

PIGA Antibody (C-term) can be refrigerated at 2-8°C for up to 6 months. For long term storage, place the at -20°C.

---

**Precautions:**

PIGA Antibody (C-term) is for research use only and not for use in diagnostic or therapeutic procedures.

---