

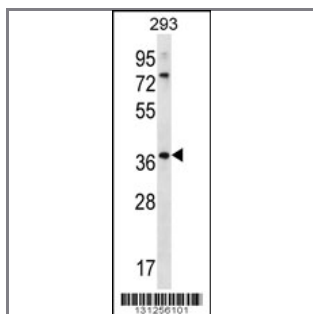
OR6X1 Antibody (C-term)

Peptide Affinity Purified Rabbit Polyclonal Antibody (Pab)

Catalog #	Applications:	Reactivity:	Accessions:
AP12369b	WB, E	H	NP_001005188.1 , Q8NH79
Concentration:	Size:	Isotype:	Clone Name:
0.25 mg/ml	0.1 mg	Rabbit Ig	RB31256

Application Data:

Calculated MW: 34727 Da



OR6X1 Antibody (C-term) (Cat. #AP12369b) western blot analysis in 293 cell line lysates (35ug/lane). This demonstrates the OR6X1 antibody detected the OR6X1 protein (arrow).

Gene ID:	Gene Symbol:
390260	OR6X1

Other Names:

OR6X1; Olfactory receptor 6X1;

Target/Specificity:

This OR6X1 antibody is generated from rabbits immunized with a KLH conjugated synthetic peptide between 283-313 amino acids from the C-terminal region of human OR6X1.

Application Notes:

The suggested dilution is:

ELISA 1:1,000

Western blotting 1:100~500

Format:

Purified polyclonal antibody supplied in PBS with 0.09% (W/V) sodium azide. This antibody is purified through a protein A column, followed by peptide affinity purification.

Storage:

OR6X1 Antibody (C-term) can be refrigerated at 2-8°C for up to 6 months. For long term storage, place the at -20°C.

Precautions:

OR6X1 Antibody (C-term) is for research use only and not for use in diagnostic or therapeutic procedures.
