

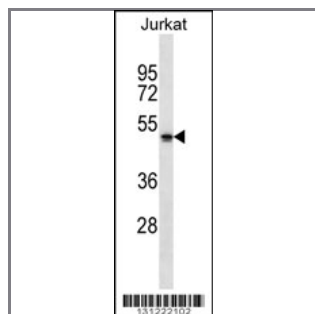
NBPF5 Antibody (C-term)

Peptide Affinity Purified Rabbit Polyclonal Antibody (Pab)

Catalog #	Applications:	Reactivity:	Accessions:
AP12364b	WB, E	H	XP_001714524.1 , Q86XG9
Concentration:	Size:	Isotype:	Clone Name:
0.25 mg/ml	0.1 mg	Rabbit Ig	RB31222

Application Data:

Calculated MW: 40546 Da



NBPF5 Antibody (C-term) (Cat. #AP12364b) western blot analysis in Jurkat cell line lysates (35ug/lane). This demonstrates the NBPF5 antibody detected the NBPF5 protein (arrow).

Gene ID:	Gene Symbol:
284610	NBPF5

Other Names:

NBPF5;Neuroblastoma breakpoint family member 5;

Target/Specificity:

This NBPF5 antibody is generated from rabbits immunized with a KLH conjugated synthetic peptide between 270-299 amino acids from the C-terminal region of human NBPF5.

Application Notes:

The suggested dilution is:

ELISA 1:1,000

Western blotting 1:100~500

Format:

Purified polyclonal antibody supplied in PBS with 0.09% (W/V) sodium azide. This antibody is purified through a protein A column, followed by peptide affinity purification.

Storage:

NBPF5 Antibody (C-term) can be refrigerated at 2-8°C for up to 6 months. For long term storage, place the at -20°C.

Precautions:

NBPF5 Antibody (C-term) is for research use only and not for use in diagnostic or therapeutic procedures.
