

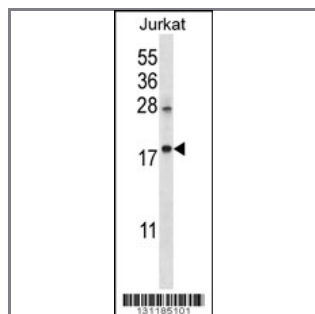
KRTAP25-1 Antibody (C-term)

Peptide Affinity Purified Rabbit Polyclonal Antibody (Pab)

Catalog #	Applications:	Reactivity:	Accessions:
AP12354b	WB, E	H	NP_001122070.1 , Q3LHN0
Concentration:	Size:	Isotype:	Clone Name:
0.25 mg/ml	0.1 mg	Rabbit Ig	RB31185

Application Data:

Calculated MW: 11738 Da



KRTAP25-1 Antibody (C-term) (Cat. #AP12354b) western blot analysis in Jurkat cell line lysates (35ug/lane). This demonstrates the KRTAP25-1 antibody detected the KRTAP25-1 protein (arrow).

Gene ID:	Gene Symbol:
100131902	KRTAP25-1

Other Names:

KRTAP25-1;Keratin-associated protein 25-1;KAP25.1

Target/Specificity:

This KRTAP25-1 antibody is generated from rabbits immunized with a KLH conjugated synthetic peptide between 80-110 amino acids from the C-terminal region of human KRTAP25-1.

Application Notes:

The suggested dilution is:

ELISA 1:1,000

Western blotting 1:100~500

Format:

Purified polyclonal antibody supplied in PBS with 0.09% (W/V) sodium azide. This antibody is purified through a protein A column, followed by peptide affinity purification.

Storage:

KRTAP25-1 Antibody (C-term) can be refrigerated at 2-8°C for up to 6 months. For long term storage, place the at -20°C.

Precautions:

KRTAP25-1 Antibody (C-term) is for research use only and not for use in diagnostic or therapeutic procedures.
