

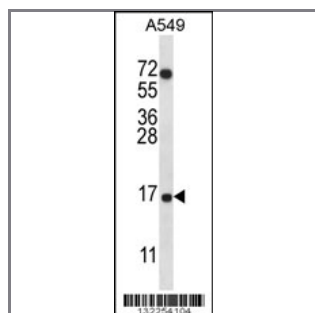
## COX7A2L Antibody (Center)

### Peptide Affinity Purified Rabbit Polyclonal Antibody (Pab)

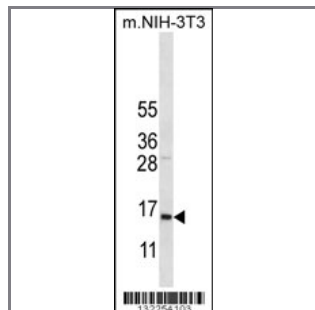
Catalog #	Applications:	Reactivity:	Accessions:
AP12338c	WB, IHC, E	H, M	<a href="#">O14548</a> , <a href="#">NP_004709.2</a>
Concentration:	Size:	Isotype:	Clone Name:
0.25 mg/ml	0.1 mg	Rabbit Ig	RB32254

#### Application Data:

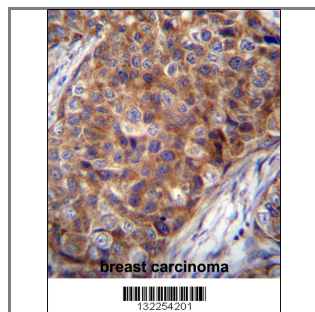
Calculated MW: 12615 Da



COX7A2L Antibody (Center) (Cat. #AP12338c) western blot analysis in A549 cell line lysates (35ug/lane). This demonstrates the COX7A2L antibody detected the COX7A2L protein (arrow).



COX7A2L Antibody (Center) (Cat. #AP12338c) western blot analysis in mouse NIH-3T3 cell line lysates (35ug/lane). This demonstrates the COX7A2L antibody detected the COX7A2L protein (arrow).



COX7A2L Antibody (Center) (Cat. #AP12338c) immunohistochemistry analysis in formalin fixed and paraffin embedded human breast carcinoma followed by peroxidase conjugation of the secondary antibody and DAB staining. This data demonstrates the use of COX7A2L Antibody (Center) for immunohistochemistry. Clinical relevance has not been evaluated.

Gene ID:	Gene Symbol:
<a href="#">9167</a>	COX7A2L

#### Other Names:

COX7A2L;Cytochrome c oxidase subunit 7A-related protein, mitochondrial;COX7AR; COX7RP

---

**Target/Specificity:**

This COX7A2L antibody is generated from rabbits immunized with a KLH conjugated synthetic peptide between 36-65 amino acids from the Central region of human COX7A2L.

---

**Application Notes:**

The suggested dilution is:

ELISA 1:1,000

Western blotting 1:100~500

Immunohistochemistry 1:10~50

---

**Format:**

Purified polyclonal antibody supplied in PBS with 0.09% (W/V) sodium azide. This antibody is purified through a protein A column, followed by peptide affinity purification.

---

**Storage:**

COX7A2L Antibody (Center) can be refrigerated at 2-8°C for up to 6 months. For long term storage, place the at -20°C.

---

**Precautions:**

COX7A2L Antibody (Center) is for research use only and not for use in diagnostic or therapeutic procedures.

---