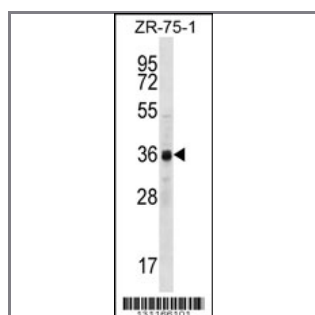


CCNYL2 Antibody (Center)

Peptide Affinity Purified Rabbit Polyclonal Antibody (Pab)

Catalog #	Applications:	Reactivity:	Accessions:
AP12313c	WB, E	H	Q5T2Q4
Concentration:	Size:	Isotype:	Clone Name:
0.25 mg/ml	0.1 mg	Rabbit Ig	RB31166

Application Data: Calculated MW: 41278 Da



CCNYL2 Antibody (Center) (Cat. #AP12313c) western blot analysis in ZR-75-1 cell line lysates (35ug/lane). This demonstrates the CCNYL2 antibody detected the CCNYL2 protein (arrow).

Gene ID:	Gene Symbol:
414194	CCNYL2

Other Names:

CCNYL2; Cyclin-Y-like protein 2; C10orf21

Target/Specificity:

This CCNYL2 antibody is generated from rabbits immunized with a KLH conjugated synthetic peptide between 161-191 amino acids from the Central region of human CCNYL2.

Application Notes:

The suggested dilution is:

ELISA 1:1,000

Western blotting 1:100~500

Format:

Purified polyclonal antibody supplied in PBS with 0.09% (W/V) sodium azide. This antibody is purified through a protein A column, followed by peptide affinity purification.

Storage:

CCNYL2 Antibody (Center) can be refrigerated at 2-8°C for up to 6 months. For long term storage,

place the at -20°C.

Precautions:

CCNYL2 Antibody (Center) is for research use only and not for use in diagnostic or therapeutic procedures.
