

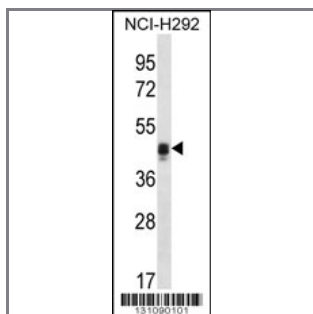
CALU Antibody (C-term)

Peptide Affinity Purified Rabbit Polyclonal Antibody (Pab)

Catalog #	Applications:	Reactivity:	Accessions:
AP12308b	WB, IHC, E	H	NP_001124146.1 , NP_001210.1 , O43852
Concentration:	Size:	Isotype:	Clone Name:
0.25 mg/ml	0.1 mg	Rabbit Ig	RB31090

Application Data:

Calculated MW: 37107 Da



CALU Antibody (C-term) (Cat. #AP12308b) western blot analysis in NCI-H292 cell line lysates (35ug/lane). This demonstrates the CALU antibody detected the CALU protein (arrow).



CALU Antibody (C-term) (Cat. #AP12308b) immunohistochemistry analysis in formalin fixed and paraffin embedded human placenta tissue followed by peroxidase conjugation of the secondary antibody and DAB staining. This data demonstrates the use of CALU Antibody (C-term) for immunohistochemistry. Clinical relevance has not been evaluated.

Gene ID:	Gene Symbol:
813	CALU

Other Names:

CALU; Calumenin;

Target/Specificity:

This CALU antibody is generated from rabbits immunized with a KLH conjugated synthetic peptide between 216-246 amino acids from the C-terminal region of human CALU.

Application Notes:

The suggested dilution is:

ELISA 1:1,000
Western blotting 1:100~500
Immunohistochemistry 1:10~50

Format:

Purified polyclonal antibody supplied in PBS with 0.09% (W/V) sodium azide. This antibody is purified through a protein A column, followed by peptide affinity purification.

Storage:

CALU Antibody (C-term) can be refrigerated at 2-8°C for up to 6 months. For long term storage, place the at -20°C.

Precautions:

CALU Antibody (C-term) is for research use only and not for use in diagnostic or therapeutic procedures.
