

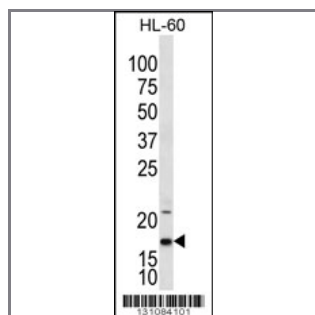
## IL1F5 Antibody (N-term)

### Peptide Affinity Purified Rabbit Polyclonal Antibody (Pab)

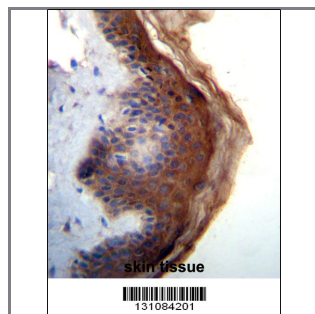
Catalog #	Applications:	Reactivity:	Accessions:
AP12304a	WB, IHC, E	H	<a href="#">NP_775262.1</a> , <a href="#">NP_036407.1</a> , <a href="#">Q9UBH0</a>
Concentration:	Size:	Isotype:	Clone Name:
0.25 mg/ml	0.1 mg	Rabbit Ig	RB31084

#### Application Data:

**Calculated MW: 16962 Da**



IL1F5 Antibody (N-term) (Cat. #AP12304a) western blot analysis in HL-60 cell line lysates (35ug/lane). This demonstrates the IL1F5 antibody detected the IL1F5 protein (arrow).



IL1F5 Antibody (N-term) (Cat. #AP12304a) immunohistochemistry analysis in formalin fixed and paraffin embedded human skin tissue followed by peroxidase conjugation of the secondary antibody and DAB staining. This data demonstrates the use of IL1F5 Antibody (N-term) for immunohistochemistry. Clinical relevance has not been evaluated.

Gene ID:	Gene Symbol:
<a href="#">26525</a>	IL1F5

#### Other Names:

IL1F5; Interleukin-1 family member 5; FIL1D; IL1HY1; IL1L1; IL1RP3

#### Target/Specificity:

This IL1F5 antibody is generated from rabbits immunized with a KLH conjugated synthetic peptide between 75-104 amino acids from the N-terminal region of human IL1F5.

#### Application Notes:

The suggested dilution is:

ELISA 1:1,000

Western blotting 1:100~500

Immunohistochemistry 1:10~50

---

**Format:**

Purified polyclonal antibody supplied in PBS with 0.09% (W/V) sodium azide. This antibody is purified through a protein A column, followed by peptide affinity purification.

---

**Storage:**

IL1F5 Antibody (N-term) can be refrigerated at 2-8°C for up to 6 months. For long term storage, place the at -20°C.

---

**Precautions:**

IL1F5 Antibody (N-term) is for research use only and not for use in diagnostic or therapeutic procedures.

---