

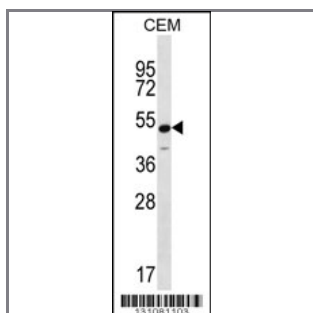
KCNJ8 Antibody (N-term)

Peptide Affinity Purified Rabbit Polyclonal Antibody (Pab)

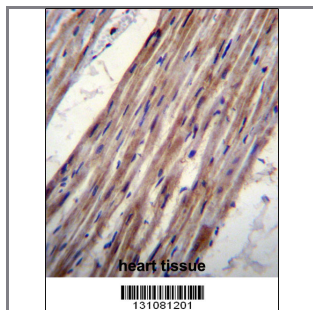
Catalog #	Applications:	Reactivity:	Accessions:
AP12302a	WB, IHC, E	H	NP_004973.1 , Q15842
Concentration:	Size:	Isotype:	Clone Name:
0.25 mg/ml	0.1 mg	Rabbit Ig	RB31081

Application Data:

Calculated MW: 47968 Da



KCNJ8 Antibody (N-term) (Cat. #AP12302a) western blot analysis in CEM cell line lysates (35ug/lane). This demonstrates the KCNJ8 antibody detected the KCNJ8 protein (arrow).



KCNJ8 Antibody (N-term) (Cat. #AP12302a) immunohistochemistry analysis in formalin fixed and paraffin embedded human heart tissue followed by peroxidase conjugation of the secondary antibody and DAB staining. This data demonstrates the use of KCNJ8 Antibody (N-term) for immunohistochemistry. Clinical relevance has not been evaluated.

Gene ID:	Gene Symbol:
3764	KCNJ8

Other Names:

KCNJ8;ATP-sensitive inward rectifier potassium channel 8;

Target/Specificity:

This KCNJ8 antibody is generated from rabbits immunized with a KLH conjugated synthetic peptide between 3-33 amino acids from the N-terminal region of human KCNJ8.

Application Notes:

The suggested dilution is:
ELISA 1:1,000

Western blotting 1:100~500
Immunohistochemistry 1:10~50

Format:

Purified polyclonal antibody supplied in PBS with 0.09% (W/V) sodium azide. This antibody is purified through a protein A column, followed by peptide affinity purification.

Storage:

KCNJ8 Antibody (N-term) can be refrigerated at 2-8°C for up to 6 months. For long term storage, place the at -20°C.

Precautions:

KCNJ8 Antibody (N-term) is for research use only and not for use in diagnostic or therapeutic procedures.
