

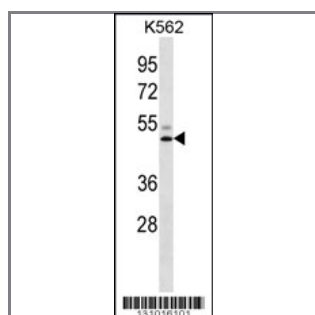
## LIPC Antibody (Center)

### Peptide Affinity Purified Rabbit Polyclonal Antibody (Pab)

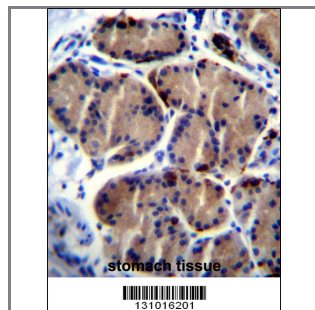
Catalog #	Applications:	Reactivity:	Accessions:
AP12283c	WB, IHC, E	H	<a href="#">NP_000227.2</a> , <a href="#">P11150</a>
Concentration:	Size:	Isotype:	Clone Name:
0.25 mg/ml	0.1 mg	Rabbit Ig	RB31016

#### Application Data:

Calculated MW: 55880 Da



LIPC Antibody (Center) (Cat. #AP12283c) western blot analysis in K562 cell line lysates (35ug/lane). This demonstrates the LIPC antibody detected the LIPC protein (arrow).



LIPC Antibody (Center) (Cat. #AP12283c) immunohistochemistry analysis in formalin fixed and paraffin embedded human stomach tissue followed by peroxidase conjugation of the secondary antibody and DAB staining. This data demonstrates the use of LIPC Antibody (Center) for immunohistochemistry. Clinical relevance has not been evaluated.

Gene ID:	Gene Symbol:
<a href="#">3990</a>	LIPC

#### Other Names:

LIPC;Hepatic triacylglycerol lipase;HTGL

#### Target/Specificity:

This LIPC antibody is generated from rabbits immunized with a KLH conjugated synthetic peptide between 309-338 amino acids from the Central region of human LIPC.

#### Application Notes:

The suggested dilution is:  
ELISA 1:1,000

Western blotting 1:100~500  
Immunohistochemistry 1:10~50

---

**Format:**

Purified polyclonal antibody supplied in PBS with 0.09% (W/V) sodium azide. This antibody is purified through a protein A column, followed by peptide affinity purification.

---

**Storage:**

LIPC Antibody (Center) can be refrigerated at 2-8°C for up to 6 months. For long term storage, place the at -20°C.

---

**Precautions:**

LIPC Antibody (Center) is for research use only and not for use in diagnostic or therapeutic procedures.

---