

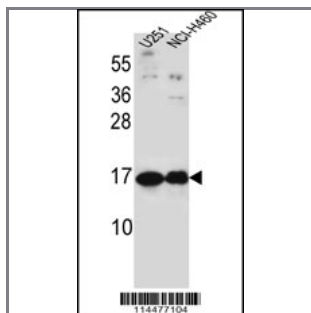
PTN Antibody (C-term)

Peptide Affinity Purified Rabbit Polyclonal Antibody (Pab)

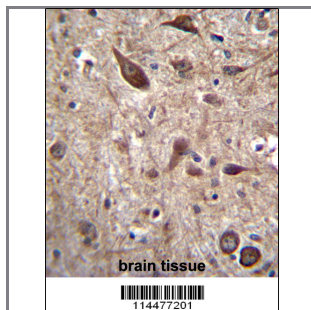
Catalog #	Applications:	Reactivity:	Accessions:
AP12263b	WB, IHC, E	H	P21246 , NP_002816.1
Concentration:	Size:	Isotype:	Clone Name:
0.25 mg/ml	0.1 mg	Rabbit Ig	RB14477

Application Data:

Calculated MW: 18942 Da



PTN Antibody (C-term) (Cat. #AP12263b) western blot analysis in U251,NCI-H460 cell line lysates (35ug/lane).This demonstrates the PTN antibody detected the PTN protein (arrow).



PTN Antibody (C-term) (Cat. #AP12263b)immunohistochemistry analysis in formalin fixed and paraffin embedded human brain tissue followed by peroxidase conjugation of the secondary antibody and DAB staining.This data demonstrates the use of PTN Antibody (C-term) for immunohistochemistry. Clinical relevance has not been evaluated.

Gene ID:	Gene Symbol:
5764	PTN

Other Names:

PTN;Pleiotrophin;HBNF1; NRG1

Target/Specificity:

This PTN antibody is generated from rabbits immunized with a KLH conjugated synthetic peptide between 125-154 amino acids from the C-terminal region of human PTN.

Application Notes:

The suggested dilution is:
ELISA 1:1,000

Western blotting 1:100~500
Immunohistochemistry 1:10~50

Format:

Purified polyclonal antibody supplied in PBS with 0.09% (W/V) sodium azide. This antibody is purified through a protein A column, followed by peptide affinity purification.

Storage:

PTN Antibody (C-term) can be refrigerated at 2-8°C for up to 6 months. For long term storage, place the at -20°C.

Precautions:

PTN Antibody (C-term) is for research use only and not for use in diagnostic or therapeutic procedures.
