

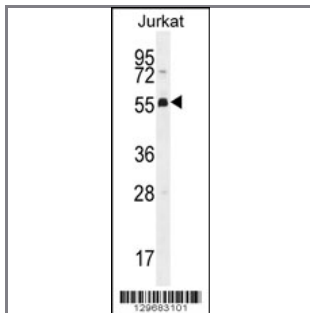
## PODNL1 Antibody (Center)

### Peptide Affinity Purified Rabbit Polyclonal Antibody (Pab)

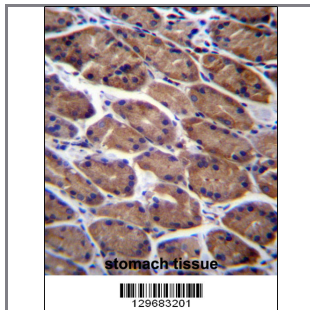
Catalog #	Applications:	Reactivity:	Accessions:
AP12207c	WB, IHC, E	H	<a href="#">NP_079101.2</a> , <a href="#">Q6PEZ8</a>
Concentration:	Size:	Isotype:	Clone Name:
0.25 mg/ml	0.1 mg	Rabbit Ig	RB29683

#### Application Data:

Calculated MW: 56539 Da



PODNL1 Antibody (Center) (Cat. #AP12207c) western blot analysis in Jurkat cell line lysates (35ug/lane). This demonstrates the PODNL1 antibody detected the PODNL1 protein (arrow).



PODNL1 Antibody (Center) (Cat. #AP12207c) immunohistochemistry analysis in formalin fixed and paraffin embedded human stomach tissue followed by peroxidase conjugation of the secondary antibody and DAB staining. This data demonstrates the use of PODNL1 Antibody (Center) for immunohistochemistry. Clinical relevance has not been evaluated.

Gene ID:	Gene Symbol:
<a href="#">79883</a>	PODNL1

#### Other Names:

PODNL1, Podocan-like protein 1, SLRR5B

#### Target/Specificity:

This PODNL1 antibody is generated from rabbits immunized with a KLH conjugated synthetic peptide between 166-195 amino acids from the Central region of human PODNL1.

#### Application Notes:

The suggested dilution is:  
ELISA 1:1,000

Western blotting 1:100~500  
Immunohistochemistry 1:10~50

---

**Format:**

Purified polyclonal antibody supplied in PBS with 0.09% (W/V) sodium azide. This antibody is purified through a protein A column, followed by peptide affinity purification.

---

**Storage:**

PODNL1 Antibody (Center) can be refrigerated at 2-8°C for up to 6 months. For long term storage, place the at -20°C.

---

**Precautions:**

PODNL1 Antibody (Center) is for research use only and not for use in diagnostic or therapeutic procedures.

---