

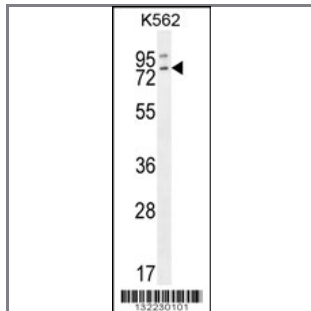
RASGRP2 Antibody (N-term)

Peptide Affinity Purified Rabbit Polyclonal Antibody (Pab)

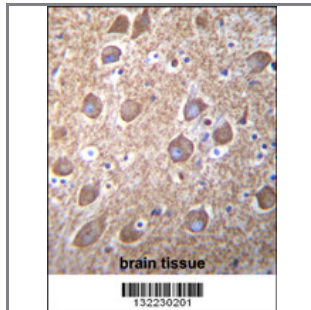
Catalog #	Applications:	Reactivity:	Accessions:
AP12183a	WB, IF, IHC, E	H	NP_001092141.1 , NP_722541.1 , Q7LDG7 , NP_001092140.1
Concentration:	Size:	Isotype:	Clone Name:
0.25 mg/ml	0.1 mg	Rabbit Ig	RB32230

Application Data:

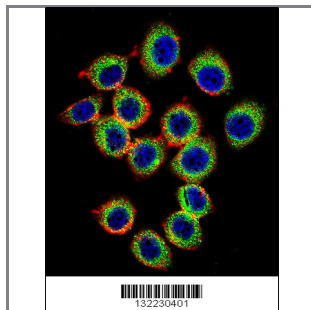
Calculated MW: 75kd Isoform 2. 69248 Da



RASGRP2 Antibody (N-term) (Cat. #AP12183a) western blot analysis in K562 cell line lysates (35ug/lane). This demonstrates the RASGRP2 antibody detected the RASGRP2 protein (arrow).



RASGRP2 Antibody (N-term) (Cat. #AP12183a) immunohistochemistry analysis in formalin fixed and paraffin embedded human brain tissue followed by peroxidase conjugation of the secondary antibody and DAB staining. This data demonstrates the use of RASGRP2 Antibody (N-term) for immunohistochemistry. Clinical relevance has not been evaluated.



Confocal immunofluorescent analysis of RASGRP2 Antibody (N-term) (Cat#AP12183a) with U-251MG cell followed by Alexa Fluor 488-conjugated goat anti-rabbit IgG (green). Actin filaments have been labeled with Alexa Fluor 555 phalloidin (red). DAPI was used to stain the cell nuclei (blue).

Gene ID:

[10235](#)

Gene Symbol:

RASGRP2

Other Names:

RASGRP2,RAS guanyl-releasing protein 2,CDC25L; MCG7

Target/Specificity:

This RASGRP2 antibody is generated from rabbits immunized with a KLH conjugated synthetic peptide between 14-42 amino acids from the N-terminal region of human RASGRP2.

Application Notes:

The suggested dilution is:

ELISA 1:1,000

Western blotting 1:100~500

Immunohistochemistry 1:10~50

Immunofluorescence 1:10~50

Format:

Purified polyclonal antibody supplied in PBS with 0.09% (W/V) sodium azide. This antibody is purified through a protein A column, followed by peptide affinity purification.

Storage:

Maintain refrigerated at 2-8°C for up to 6 months. For long term storage store at -20°C in small aliquots to prevent freeze-thaw cycles.

Precautions:

RASGRP2 Antibody (N-term) is for research use only and not for use in diagnostic or therapeutic procedures.
