

## TOR2A Antibody (Center)

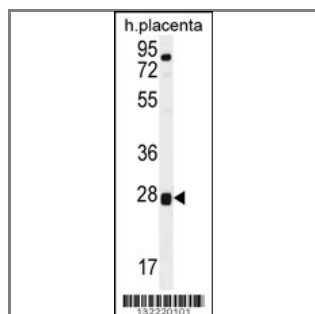
### Peptide Affinity Purified Rabbit Polyclonal Antibody (Pab)

Catalog #	Applications:	Reactivity:	Accessions:
AP12178c	WB, IHC, E	H	<a href="#">NP_001127902.1</a> , <a href="#">NP_569726.2</a> , <a href="#">Q5JU69</a> , <a href="#">NP_001127903.1</a> , <a href="#">NP_001078816.1</a>

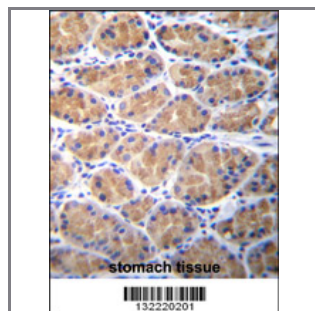
Concentration:	Size:	Isotype:	Clone Name:
0.25 mg/ml	0.1 mg	Rabbit Ig	RB32220

#### Application Data:

Calculated MW: 35714 Da



TOR2A Antibody (Center) (Cat. #AP12178c) western blot analysis in human placenta tissue lysates (35ug/lane). This demonstrates the TOR2A antibody detected the TOR2A protein (arrow).



TOR2A Antibody (Center) (Cat. #AP12178c) immunohistochemistry analysis in formalin fixed and paraffin embedded human stomach tissue followed by peroxidase conjugation of the secondary antibody and DAB staining. This data demonstrates the use of TOR2A Antibody (Center) for immunohistochemistry. Clinical relevance has not been evaluated.

Gene ID:	Gene Symbol:
<a href="#">27433</a>	TOR2A

#### Other Names:

TOR2A, Torsin-2A, TORP1

#### Target/Specificity:

This TOR2A antibody is generated from rabbits immunized with a KLH conjugated synthetic peptide between 201-229 amino acids from the Central region of human TOR2A.

**Application Notes:**

The suggested dilution is:

ELISA 1:1,000

Western blotting 1:100~500

Immunohistochemistry 1:10~50

---

**Format:**

Purified polyclonal antibody supplied in PBS with 0.09% (W/V) sodium azide. This antibody is purified through a protein A column, followed by peptide affinity purification.

---

**Storage:**

Maintain refrigerated at 2-8°C for up to 6 months. For long term storage store at -20°C in small aliquots to prevent freeze-thaw cycles.

---

**Precautions:**

TOR2A Antibody (Center) is for research use only and not for use in diagnostic or therapeutic procedures.

---